

Product datasheet for **TA346643**

SDOS (NUDT16L1) Rabbit Polyclonal Antibody

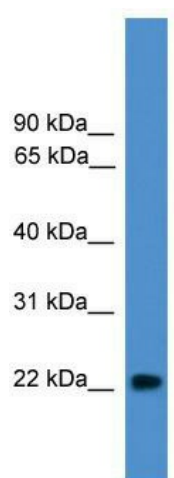
Product data:

Product Type:	Primary Antibodies
Applications:	WB
Recommended Dilution:	WB
Reactivity:	Human
Host:	Rabbit
Isotype:	IgG
Clonality:	Polyclonal
Immunogen:	The immunogen for anti-NUDT16L1 antibody: synthetic peptide directed towards the middle region of human NUDT16L1. Synthetic peptide located within the following region: LNRVLGLGLGCLRLTEADYLSSHLTEGPHRVAHLYARQLTLEQLHAVEI
Formulation:	Liquid. Purified antibody supplied in 1x PBS buffer with 0.09% (w/v) sodium azide and 2% sucrose.
Purification:	Affinity Purified
Conjugation:	Unconjugated
Storage:	Store at -20°C as received.
Stability:	Stable for 12 months from date of receipt.
Predicted Protein Size:	23 kDa
Gene Name:	nudix hydrolase 16 like 1
Database Link:	NP_115725 Entrez Gene 84309 Human Q9BRJ7
Background:	NUDT16L1 is a probable adapter protein, which may link syndecan-4 (SDC4) and paxilin (TGFB111 and PXN) receptors.
Synonyms:	SDOS
Note:	Immunogen Sequence Homology: Dog: 100%; Pig: 100%; Rat: 100%; Human: 100%; Mouse: 100%; Bovine: 100%; Rabbit: 100%; Guinea pig: 100%



[View online »](#)

Product images:



WB Suggested Anti-NUDT16L1 Antibody Titration:
0.2-1 ug/ml; ELISA Titer: 1: 312500; Positive
Control: Jurkat cell lysate