

## Product datasheet for **TA346642**

### Ankrd13c Rabbit Polyclonal Antibody

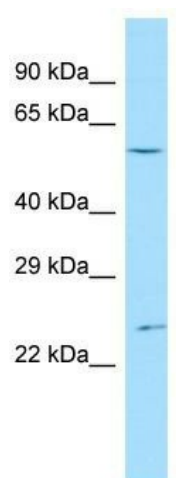
#### Product data:

Product Type:	Primary Antibodies
Applications:	WB
Recommended Dilution:	WB
Reactivity:	Mouse
Host:	Rabbit
Isotype:	IgG
Clonality:	Polyclonal
Immunogen:	The immunogen for Anti-Ankrd13c antibody is: synthetic peptide directed towards the C-terminal region of Mouse Ankrd13c. Synthetic peptide located within the following region: EQSFEPVRRQSLTPPPQNTITWEEYISAENGKAPHLGRELVCESKTKTFK
Formulation:	Liquid. Purified antibody supplied in 1x PBS buffer with 0.09% (w/v) sodium azide and 2% sucrose. <i>Note that this product is shipped as lyophilized powder to China customers.</i>
Purification:	Affinity Purified
Conjugation:	Unconjugated
Storage:	Store at -20°C as received.
Stability:	Stable for 12 months from date of receipt.
Predicted Protein Size:	60 kDa
Gene Name:	ankyrin repeat domain 13c
Database Link:	<a href="#">NP_001013828</a> <a href="#">Entrez Gene 433667 Mouse Q3UX43</a>
Background:	Acts as a molecular chaperone for G protein-coupled receptors, regulating their biogenesis and exit from the ER.
Synonyms:	dj677H15.3; DKFZP566D1346; FLJ14998; RP4-677H15.5
Note:	Immunogen Sequence Homology: Dog: 100%; Pig: 100%; Rat: 100%; Horse: 100%; Human: 100%; Mouse: 100%; Bovine: 100%; Rabbit: 100%; Guinea pig: 100%; Zebrafish: 86%



[View online »](#)

## Product images:



Host: Rabbit; Target Name: Ankrd13c; Sample  
Tissue: Mouse Testis lysates; Antibody Dilution:  
1.0 ug/ml