

Product datasheet for **TA346641**

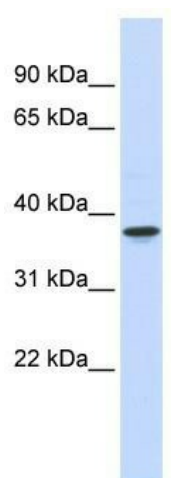
WDR58 (THOC6) Rabbit Polyclonal Antibody

Product data:

Product Type:	Primary Antibodies
Applications:	WB
Recommended Dilution:	WB
Reactivity:	Human
Host:	Rabbit
Isotype:	IgG
Clonality:	Polyclonal
Immunogen:	The immunogen for anti-THOC6 antibody: synthetic peptide directed towards the middle region of human THOC6. Synthetic peptide located within the following region: AGGDCQLHTMDLETGTFTRVLRGHTDYIHCLALRERSPEVLSGGEDGAVR
Formulation:	Liquid. Purified antibody supplied in 1x PBS buffer with 0.09% (w/v) sodium azide and 2% sucrose. <i>Note that this product is shipped as lyophilized powder to China customers.</i>
Purification:	Affinity Purified
Conjugation:	Unconjugated
Storage:	Store at -20°C as received.
Stability:	Stable for 12 months from date of receipt.
Predicted Protein Size:	37 kDa
Gene Name:	THO complex 6
Database Link:	NP_077315 Entrez Gene 79228 Human Q86W42
Background:	THOC6 belongs to the WD repeat THOC6 family. It contains 7 WD repeats. The function of the THOC6 protein remains unknown.
Synonyms:	BBIS; fSAP35; WDR58
Note:	Immunogen Sequence Homology: Dog: 100%; Pig: 100%; Rat: 100%; Horse: 100%; Human: 100%; Mouse: 100%; Bovine: 100%; Guinea pig: 100%; Zebrafish: 79%



[View online »](#)

Product images:

WB Suggested Anti-THOC6 Antibody Titration:
0.2-1 ug/ml; ELISA Titer: 1: 62500; Positive
Control: Human Pancreas