

## Product datasheet for **TA346640**

### FAM113A (PCED1A) Rabbit Polyclonal Antibody

#### Product data:

Product Type:	Primary Antibodies
Applications:	WB
Recommended Dilution:	WB
Reactivity:	Human
Host:	Rabbit
Isotype:	IgG
Clonality:	Polyclonal
Immunogen:	The immunogen for anti-FAM113A antibody: synthetic peptide directed towards the C terminal of human FAM113A. Synthetic peptide located within the following region: YLPQPSPPLFPPLPQDTPFFPGQPFPPHEFFNYPVEDFSMPPLGCG
Formulation:	Liquid. Purified antibody supplied in 1x PBS buffer with 0.09% (w/v) sodium azide and 2% sucrose.
Purification:	Affinity Purified
Conjugation:	Unconjugated
Storage:	Store at -20°C as received.
Stability:	Stable for 12 months from date of receipt.
Predicted Protein Size:	52 kDa
Gene Name:	PC-esterase domain containing 1A
Database Link:	<a href="#">NP_073597</a> <a href="#">Entrez Gene 64773 Human</a> <a href="#">Q9H1Q7</a>
Background:	The protein encoded by this gene is a member of the GDSL/SGNH superfamily. Members of this family are hydrolytic enzymes with esterase and lipase activity and broad substrate specificity. This protein belongs to the Pmr5-Cas1p-esterase subfamily in that it contains the catalytic triad comprised of serine, aspartate and histidine and lacks two conserved regions (glycine after strand S2 and GxND motif). A pseudogene of this gene has been identified on the long arm of chromosome 2. Alternative splicing results in multiple transcript variants that encode different protein isoforms. [provided by RefSeq, Sep 2012]

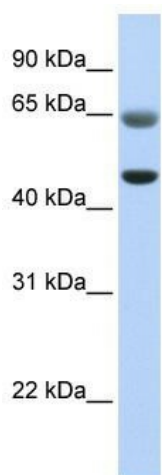


[View online »](#)

**Synonyms:** bA12M19.1; C20orf81; FAM113A

**Note:** Immunogen Sequence Homology: Dog: 100%; Human: 100%; Rat: 92%; Mouse: 92%; Pig: 86%; Horse: 85%; Bovine: 85%; Rabbit: 79%; Guinea pig: 79%

**Product images:**



WB Suggested Anti-FAM113A Antibody Titration:  
0.2-1 ug/ml; ELISA Titer: 1: 312500; Positive  
Control: Human Muscle