

## Product datasheet for **TA346638**

### PPP1R11 Rabbit Polyclonal Antibody

#### Product data:

Product Type:	Primary Antibodies
Applications:	WB
Recommended Dilution:	WB
Reactivity:	Human
Host:	Rabbit
Isotype:	IgG
Clonality:	Polyclonal
Immunogen:	The immunogen for anti-PPP1R11 antibody: synthetic peptide directed towards the N terminal of human PPP1R11. Synthetic peptide located within the following region: MAEAGAGLSETVTETTIVTTEPENRSLTIKLRKRKPEKKVEWTSDTVND
Formulation:	Liquid. Purified antibody supplied in 1x PBS buffer with 0.09% (w/v) sodium azide and 2% sucrose. <i>Note that this product is shipped as lyophilized powder to China customers.</i>
Purification:	Affinity Purified
Conjugation:	Unconjugated
Storage:	Store at -20°C as received.
Stability:	Stable for 12 months from date of receipt.
Predicted Protein Size:	14 kDa
Gene Name:	protein phosphatase 1 regulatory inhibitor subunit 11
Database Link:	<a href="#">NP_068778</a> <a href="#">Entrez Gene 6992 Human O60927</a>
Background:	This gene encodes a specific inhibitor of protein phosphatase-1 (PP1) with a differential sensitivity toward the metal-independent and metal-dependent forms of PP1. The gene is located within the major histocompatibility complex class I region on chromosome 6. [provided by RefSeq, Jul 2008]
Synonyms:	HCG-V; HCGV; IPP3; TCTE5; TCTEX5

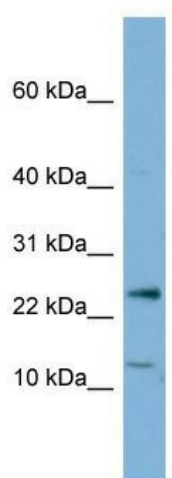


[View online »](#)

**Note:** Immunogen Sequence Homology: Dog: 100%; Pig: 100%; Rat: 100%; Horse: 100%; Human: 100%; Mouse: 100%; Bovine: 100%; Rabbit: 100%; Guinea pig: 100%; Zebrafish: 93%

**Protein Families:** Druggable Genome

**Product images:**



WB Suggested Anti-PPP1R11 Antibody Titration: 0.2-1 ug/ml; ELISA Titer: 1: 1562500; Positive Control: OVCAR-3 cell lysate. PPP1R11 is supported by BioGPS gene expression data to be expressed in OVCAR3