

Product datasheet for **TA346637**

Myozenin 1 (MYOZ1) Rabbit Polyclonal Antibody

Product data:

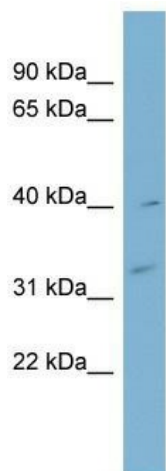
Product Type:	Primary Antibodies
Applications:	WB
Recommended Dilution:	WB
Reactivity:	Human
Host:	Rabbit
Isotype:	IgG
Clonality:	Polyclonal
Immunogen:	The immunogen for anti-MYOZ1 antibody: synthetic peptide directed towards the middle region of human MYOZ1. Synthetic peptide located within the following region: TVFKTYISPWERAMGVDPQQKMEGLIDLLAYGAKAELPKYKSFNRTAMPY
Formulation:	Liquid. Purified antibody supplied in 1x PBS buffer with 0.09% (w/v) sodium azide and 2% sucrose. <i>Note that this product is shipped as lyophilized powder to China customers.</i>
Purification:	Affinity Purified
Conjugation:	Unconjugated
Storage:	Store at -20°C as received.
Stability:	Stable for 12 months from date of receipt.
Predicted Protein Size:	32 kDa
Gene Name:	myozenin 1
Database Link:	NP_067068 Entrez Gene 58529 Human Q9NP98
Background:	The protein encoded by this gene is primarily expressed in the skeletal muscle, and belongs to the myozenin family. Members of this family function as calcineurin-interacting proteins that help tether calcineurin to the sarcomere of cardiac and skeletal muscle. They play an important role in modulation of calcineurin signaling. [provided by RefSeq, Apr 2012]
Synonyms:	CS-2; FATZ; MYOZ



[View online »](#)

Note: Immunogen Sequence Homology: Pig: 100%; Rat: 100%; Human: 100%; Mouse: 100%; Bovine: 100%; Rabbit: 100%; Guinea pig: 100%; Horse: 93%; Dog: 86%; Zebrafish: 83%; Goat: 79%; Sheep: 79%

Product images:



WB Suggested Anti-MYOZ1 Antibody Titration:
0.2-1 ug/ml; Positive Control: NCI-H226 cell lysate