

## Product datasheet for **TA346636**

### Myozenin 1 (MYOZ1) Rabbit Polyclonal Antibody

#### Product data:

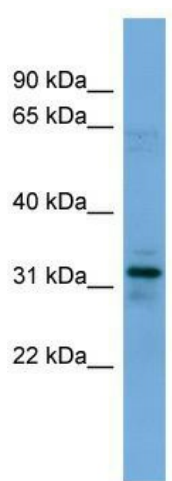
Product Type:	Primary Antibodies
Applications:	WB
Recommended Dilution:	WB
Reactivity:	Human
Host:	Rabbit
Isotype:	IgG
Clonality:	Polyclonal
Immunogen:	The immunogen for anti-MYOZ1 antibody: synthetic peptide directed towards the N terminal of human MYOZ1. Synthetic peptide located within the following region: IYENHPDVFSDDSSMDHFQKFLPTVGGQLGTAGQGFSYSKSNRGGSQAGG
Formulation:	Liquid. Purified antibody supplied in 1x PBS buffer with 0.09% (w/v) sodium azide and 2% sucrose. <i>Note that this product is shipped as lyophilized powder to China customers.</i>
Purification:	Affinity Purified
Conjugation:	Unconjugated
Storage:	Store at -20°C as received.
Stability:	Stable for 12 months from date of receipt.
Predicted Protein Size:	32 kDa
Gene Name:	myozenin 1
Database Link:	<a href="#">NP_067068</a> <a href="#">Entrez Gene 58529 Human</a> <a href="#">Q9NP98</a>
Background:	The protein encoded by this gene is primarily expressed in the skeletal muscle, and belongs to the myozenin family. Members of this family function as calcineurin-interacting proteins that help tether calcineurin to the sarcomere of cardiac and skeletal muscle. They play an important role in modulation of calcineurin signaling. [provided by RefSeq, Apr 2012]
Synonyms:	CS-2; FATZ; MYOZ



[View online »](#)

**Note:** Immunogen Sequence Homology: Dog: 100%; Pig: 100%; Rat: 100%; Horse: 100%; Human: 100%; Mouse: 100%; Rabbit: 100%; Guinea pig: 100%; Bovine: 86%

### Product images:



WB Suggested Anti-MYOZ1 Antibody Titration:  
0.2-1 ug/ml; ELISA Titer: 1: 312500; Positive  
Control: HT1080 cell lysate