

Product datasheet for **TA346634**

MPST Rabbit Polyclonal Antibody

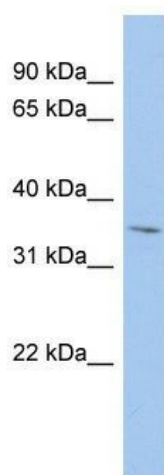
Product data:

Product Type:	Primary Antibodies
Applications:	WB
Recommended Dilution:	WB
Reactivity:	Human, Rat, Mouse
Host:	Rabbit
Isotype:	IgG
Clonality:	Polyclonal
Immunogen:	The immunogen for anti-MPST antibody: synthetic peptide directed towards the middle region of human MPST. Synthetic peptide located within the following region: DPAFIKTYEDIKENLESRRFQVVDSRATGRFRGTEPEPRDGIPEGHIPGT
Formulation:	Liquid. Purified antibody supplied in 1x PBS buffer with 0.09% (w/v) sodium azide and 2% sucrose. <i>Note that this product is shipped as lyophilized powder to China customers.</i>
Purification:	Affinity Purified
Conjugation:	Unconjugated
Storage:	Store at -20°C as received.
Stability:	Stable for 12 months from date of receipt.
Predicted Protein Size:	33 kDa
Gene Name:	mercaptopyruvate sulfurtransferase
Database Link:	NP_066949 Entrez Gene 192172 RatEntrez Gene 246221 MouseEntrez Gene 4357 Human P25325



[View online »](#)

Background:	This protein encoded by this gene catalyzes the transfer of a sulfur ion from 3-mercaptopyruvate to cyanide or other thiol compounds. It may be involved in cysteine degradation and cyanide detoxification. There is confusion in literature between this protein (mercaptopyruvate sulfurtransferase, MPST), which appears to be cytoplasmic, and thiosulfate sulfurtransferase (rhodanese, TST, GeneID:7263), which is a mitochondrial protein. Deficiency in MPST activity has been implicated in a rare inheritable disorder known as mercaptolactate-cysteine disulfiduria (MCDU). Alternatively spliced transcript variants encoding same or different isoforms have been identified for this gene. [provided by RefSeq, Jul 2008]
Synonyms:	MST; TST2; TUM1
Note:	Immunogen Sequence Homology: Dog: 100%; Pig: 100%; Goat: 100%; Horse: 100%; Human: 100%; Bovine: 100%; Rabbit: 100%; Rat: 93%; Mouse: 93%; Guinea pig: 93%
Protein Families:	Druggable Genome
Protein Pathways:	Cysteine and methionine metabolism, Metabolic pathways

Product images:

WB Suggested Anti-MPST Antibody Titration: 0.2-1 ug/ml; ELISA Titer: 1: 62500; Positive Control: HepG2 cell lysate. MPST is supported by BioGPS gene expression data to be expressed in HepG2