

Product datasheet for **TA346633**

LZTFL1 Rabbit Polyclonal Antibody

Product data:

Product Type:	Primary Antibodies
Applications:	WB
Recommended Dilution:	WB
Reactivity:	Human
Host:	Rabbit
Isotype:	IgG
Clonality:	Polyclonal
Immunogen:	The immunogen for anti-LZTFL1 antibody: synthetic peptide directed towards the C terminal of human LZTFL1. Synthetic peptide located within the following region: VQEQLHMAEKELEKKFQQTAAAYRNMKEILTKKNDQIKDLRKRLAQYEPED
Formulation:	Liquid. Purified antibody supplied in 1x PBS buffer with 0.09% (w/v) sodium azide and 2% sucrose. <i>Note that this product is shipped as lyophilized powder to China customers.</i>
Purification:	Protein A purified
Conjugation:	Unconjugated
Storage:	Store at -20°C as received.
Stability:	Stable for 12 months from date of receipt.
Predicted Protein Size:	34 kDa
Gene Name:	leucine zipper transcription factor like 1
Database Link:	NP_065080 Entrez Gene 54585 Human Q9NQ48



[View online »](#)

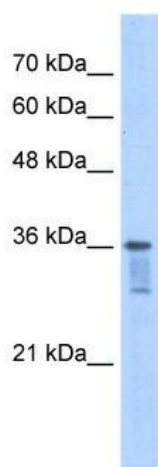
Background: This gene encodes a ubiquitously expressed protein that localizes to the cytoplasm. This protein interacts with Bardet-Biedl Syndrome (BBS) proteins and, through its interaction with BBS protein complexes, regulates protein trafficking to the ciliary membrane. Nonsense mutations in this gene cause a form of Bardet-Biedl Syndrome; a ciliopathy characterized in part by polydactyly, obesity, cognitive impairment, hypogonadism, and kidney failure. This gene may also function as a tumor suppressor; possibly by interacting with E-cadherin and the actin cytoskeleton and thereby regulating the transition of epithelial cells to mesenchymal cells. Alternative splicing of this gene results in multiple transcript variants. [provided by RefSeq, Feb 2013]

Synonyms: BBS17

Note: Immunogen Sequence Homology: Pig: 100%; Rat: 100%; Human: 100%; Mouse: 100%; Bovine: 100%; Horse: 93%; Rabbit: 93%; Zebrafish: 92%; Dog: 86%; Guinea pig: 79%

Protein Families: Transcription Factors

Product images:



WB Suggested Anti-LZTFL1 Antibody Titration: 2.5 ug/ml; Positive Control: Jurkat cell lysate LZTFL1 is supported by BioGPS gene expression data to be expressed in Jurkat