

## Product datasheet for **TA346632**

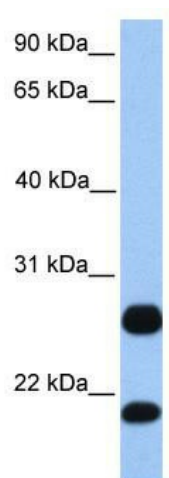
### **NPD014 (RSRP1) Rabbit Polyclonal Antibody**

#### **Product data:**

<b>Product Type:</b>	Primary Antibodies
<b>Applications:</b>	WB
<b>Recommended Dilution:</b>	WB
<b>Reactivity:</b>	Human
<b>Host:</b>	Rabbit
<b>Isotype:</b>	IgG
<b>Clonality:</b>	Polyclonal
<b>Immunogen:</b>	The immunogen for anti-C1orf63 antibody: synthetic peptide directed towards the C terminal of human C1orf63. Synthetic peptide located within the following region: PTQQRSAFSSNNSVAKPIQKSAKAATEEASSRSPKIDQKSPYGLWIPI
<b>Formulation:</b>	Liquid. Purified antibody supplied in 1x PBS buffer with 0.09% (w/v) sodium azide and 2% sucrose. <i>Note that this product is shipped as lyophilized powder to China customers.</i>
<b>Purification:</b>	Affinity Purified
<b>Conjugation:</b>	Unconjugated
<b>Storage:</b>	Store at -20°C as received.
<b>Stability:</b>	Stable for 12 months from date of receipt.
<b>Predicted Protein Size:</b>	33 kDa
<b>Gene Name:</b>	arginine/serine-rich protein 1
<b>Database Link:</b>	<a href="#">NP_064713</a> <a href="#">Entrez Gene 57035 Human</a> <a href="#">Q9BUV0</a>
<b>Background:</b>	The exact function of C1orf63 remains unknown.
<b>Synonyms:</b>	C1orf63; DJ465N24.2.1; NPD014
<b>Note:</b>	Immunogen Sequence Homology: Human: 100%



[View online »](#)

**Product images:**

WB Suggested Anti-C1orf63 Antibody Titration: 0.2-1 ug/ml; Positive Control: HepG2 cell lysate. C1orf63 is supported by BioGPS gene expression data to be expressed in HepG2