

Product datasheet for TA346629

C20orf19 (KIZ) Rabbit Polyclonal Antibody

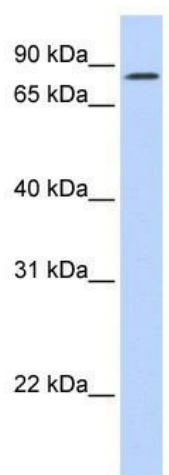
Product data:

Product Type:	Primary Antibodies
Applications:	WB
Recommended Dilution:	WB
Reactivity:	Human
Host:	Rabbit
Isotype:	IgG
Clonality:	Polyclonal
Immunogen:	The immunogen for anti-C20orf19 antibody: synthetic peptide directed towards the C terminal of human C20orf19. Synthetic peptide located within the following region: SRHENKKKPVINLKSINALWDESDDSNSEIEAALRPRNHNTDDSDDFYD
Formulation:	Liquid. Purified antibody supplied in 1x PBS buffer with 0.09% (w/v) sodium azide and 2% sucrose. <i>Note that this product is shipped as lyophilized powder to China customers.</i>
Purification:	Affinity Purified
Conjugation:	Unconjugated
Storage:	Store at -20°C as received.
Stability:	Stable for 12 months from date of receipt.
Predicted Protein Size:	75 kDa
Gene Name:	kizuna centrosomal protein
Database Link:	NP_060944 Entrez Gene 55857 Human Q2M2Z5
Background:	The protein encoded by this gene localizes to centrosomes, strengthening and stabilizing the pericentriolar region prior to spindle formation. The encoded protein usually remains with the mother centrosome after centrosomal duplication. Several transcript variants encoding different isoforms have been found for this gene. [provided by RefSeq, Feb 2013]
Synonyms:	C20orf19; HT013; Kizuna; NCRNA00153; PLK1S1; RP69
Note:	Immunogen Sequence Homology: Human: 100%; Pig: 81%



[View online »](#)

Product images:



WB Suggested Anti-C20orf19 Antibody Titration:
0.2-1 ug/ml; ELISA Titer: 1: 1562500; Positive
Control: Human heart