

Product datasheet for **TA346623**

PGCP (CPQ) Rabbit Polyclonal Antibody

Product data:

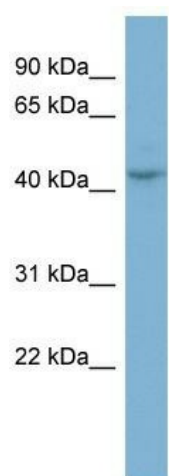
| | |
|-------------------------|--|
| Product Type: | Primary Antibodies |
| Applications: | WB |
| Recommended Dilution: | WB |
| Reactivity: | Human |
| Host: | Rabbit |
| Isotype: | IgG |
| Clonality: | Polyclonal |
| Immunogen: | The immunogen for anti-PGCP antibody: synthetic peptide directed towards the N terminal of human PGCP. Synthetic peptide located within the following region: VDTVGPRLSGSKNLEKAIQIMYQNLQQDGLKLVHLEPVRIPHWERGEESA |
| Formulation: | Liquid. Purified antibody supplied in 1x PBS buffer with 0.09% (w/v) sodium azide and 2% sucrose. <i>Note that this product is shipped as lyophilized powder to China customers.</i> |
| Purification: | Affinity Purified |
| Conjugation: | Unconjugated |
| Storage: | Store at -20°C as received. |
| Stability: | Stable for 12 months from date of receipt. |
| Predicted Protein Size: | 52 kDa |
| Gene Name: | carboxypeptidase Q |
| Database Link: | NP_057218 Entrez Gene 10404 Human Q9Y646 |
| Background: | This gene encodes a metallopeptidase that belongs to the peptidase M28 family. The encoded protein may catalyze the cleavage of dipeptides with unsubstituted terminals into amino acids. [provided by RefSeq, Jul 2013] |
| Synonyms: | LDP; PGCP |
| Note: | Immunogen Sequence Homology: Rat: 100%; Human: 100%; Mouse: 100%; Bovine: 100%; Rabbit: 100%; Pig: 93%; Horse: 93%; Dog: 79%; Guinea pig: 79% |



[View online »](#)

Protein Families: Protease

Product images:



WB Suggested Anti-PGCP Antibody Titration: 0.2-1 ug/ml; ELISA Titer: 1: 62500; Positive Control: NCI-H226 cell lysate