

## Product datasheet for **TA346622**

### IF3EI (EIF3L) Rabbit Polyclonal Antibody

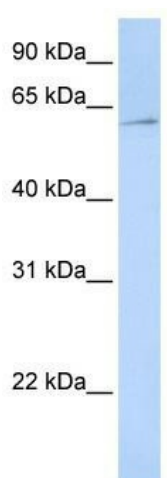
#### Product data:

Product Type:	Primary Antibodies
Applications:	WB
Recommended Dilution:	WB
Reactivity:	Human
Host:	Rabbit
Isotype:	IgG
Clonality:	Polyclonal
Immunogen:	The immunogen for anti-EIF3EIP antibody: synthetic peptide directed towards the N terminal of human EIF3EIP. Synthetic peptide located within the following region: SYPADDYESEAAAYDPYAYPSDYDMHTGDPKQDLAYERQYEQQTYQVIPEV
Formulation:	Liquid. Purified antibody supplied in 1x PBS buffer with 0.09% (w/v) sodium azide and 2% sucrose.
Purification:	Affinity Purified
Conjugation:	Unconjugated
Storage:	Store at -20°C as received.
Stability:	Stable for 12 months from date of receipt.
Predicted Protein Size:	67 kDa
Gene Name:	eukaryotic translation initiation factor 3 subunit L
Database Link:	<a href="#">NP_057175</a> <a href="#">Entrez Gene 51386 Human</a> <a href="#">Q9Y262</a>
Background:	EIF3EIP belongs to the EIF3EIP family. It interacts with EIF3E. EIF3EIP interacts with Int-6 and is associated with eukaryotic translation initiation factor 3.
Synonyms:	EIF3EIP; EIF3S6IP; EIF3S11; HSPC021; HSPC025; MSTP005
Note:	Immunogen Sequence Homology: Dog: 100%; Pig: 100%; Rat: 100%; Horse: 100%; Human: 100%; Mouse: 100%; Bovine: 100%; Rabbit: 100%; Guinea pig: 100%; Zebrafish: 86%



[View online »](#)

## Product images:



WB Suggested Anti-EIF3EIP Antibody Titration:  
0.2-1 ug/ml; ELISA Titer: 1: 1562500; Positive  
Control: Hela cell lysate