

Product datasheet for **TA346619**

TRUB2 Rabbit Polyclonal Antibody

Product data:

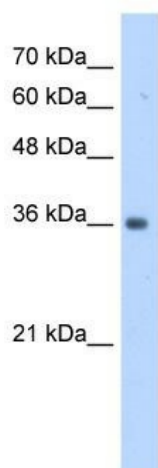
Product Type:	Primary Antibodies
Applications:	WB
Recommended Dilution:	WB
Reactivity:	Human
Host:	Rabbit
Isotype:	IgG
Clonality:	Polyclonal
Immunogen:	The immunogen for anti-TRUB2 antibody: synthetic peptide directed towards the N terminal of human TRUB2. Synthetic peptide located within the following region: MGSAGLSRLHGLFAVYKPPGLKWKHLRDTVELQLLKGLNARKPPAPKQRV
Formulation:	Liquid. Purified antibody supplied in 1x PBS buffer with 0.09% (w/v) sodium azide and 2% sucrose. <i>Note that this product is shipped as lyophilized powder to China customers.</i>
Purification:	Affinity Purified
Conjugation:	Unconjugated
Storage:	Store at -20°C as received.
Stability:	Stable for 12 months from date of receipt.
Predicted Protein Size:	37 kDa
Gene Name:	TruB pseudouridine synthase family member 2
Database Link:	NP_056494 Entrez Gene 26995 Human O95900
Background:	Pseudouridine is an abundant component of rRNAs and tRNAs and is enzymatically generated by isomerization of uridine by pseudouridine synthase (Zucchini et al., 2003 [PubMed 12736709]). [supplied by OMIM, Mar 2008]. ##Evidence-Data-START## Transcript exon combination :: AK001956.1, AF131848.1 [ECO:0000332] RNAseq introns :: mixed/partial sample support ERS025081, ERS025082 [ECO:0000350] ##Evidence-Data-END##
Synonyms:	CLONE24922



[View online »](#)

Note: Immunogen Sequence Homology: Rat: 100%; Human: 100%; Bovine: 93%; Pig: 86%; Horse: 86%; Guinea pig: 86%; Mouse: 79%

Product images:



WB Suggested Anti-TRUB2 Antibody Titration: 0.2-1 ug/ml; Positive Control: HepG2 cell lysate