

## Product datasheet for **TA346618**

### GADD45B Rabbit Polyclonal Antibody

#### Product data:

Product Type:	Primary Antibodies
Applications:	IHC, WB
Recommended Dilution:	WB, IHC
Reactivity:	Human, Mouse
Host:	Rabbit
Isotype:	IgG
Clonality:	Polyclonal
Immunogen:	The immunogen for anti-GADD45B antibody: synthetic peptide directed towards the middle region of human GADD45B. Synthetic peptide located within the following region: FCCDNDINIVRVSGMQRLAQLLGEP AETQGTEARDLHCLLVTPHTDAW
Formulation:	Liquid. Purified antibody supplied in 1x PBS buffer with 0.09% (w/v) sodium azide and 2% sucrose. <i>Note that this product is shipped as lyophilized powder to China customers.</i>
Purification:	Affinity Purified
Conjugation:	Unconjugated
Storage:	Store at -20°C as received.
Stability:	Stable for 12 months from date of receipt.
Predicted Protein Size:	18 kDa
Gene Name:	growth arrest and DNA damage inducible beta
Database Link:	<a href="#">NP_056490</a> <a href="#">Entrez Gene 17873 Mouse</a> <a href="#">Entrez Gene 4616 Human</a> <a href="#">O75293</a>

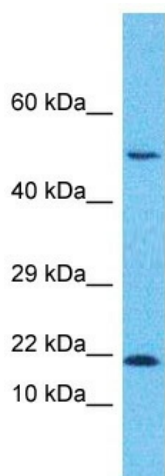


[View online »](#)

- Background:** This gene is a member of a group of genes whose transcript levels are increased following stressful growth arrest conditions and treatment with DNA-damaging agents. The genes in this group respond to environmental stresses by mediating activation of the p38/JNK pathway. This activation is mediated via their proteins binding and activating MTK1/MEKK4 kinase, which is an upstream activator of both p38 and JNK MAPKs. The function of these genes or their protein products is involved in the regulation of growth and apoptosis. These genes are regulated by different mechanisms, but they are often coordinately expressed and can function cooperatively in inhibiting cell growth. [provided by RefSeq, Jul 2008]
- Synonyms:** GADD45BETA; MYD118
- Note:** Immunogen Sequence Homology: Dog: 100%; Pig: 100%; Rat: 100%; Horse: 100%; Human: 100%; Mouse: 100%; Bovine: 100%; Guinea pig: 92%
- Protein Families:** Druggable Genome
- Protein Pathways:** Cell cycle, MAPK signaling pathway, p53 signaling pathway
- Product images:**

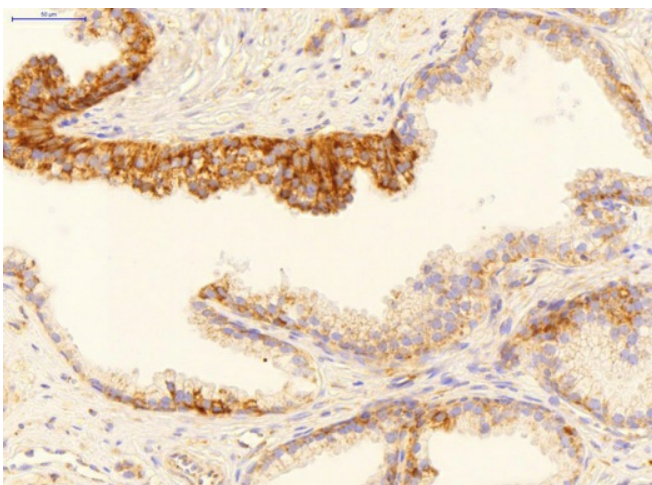


WB Suggested Anti-GADD45B Antibody Titration:  
0.2-1 ug/ml; Positive Control: HepG2 cell lysate

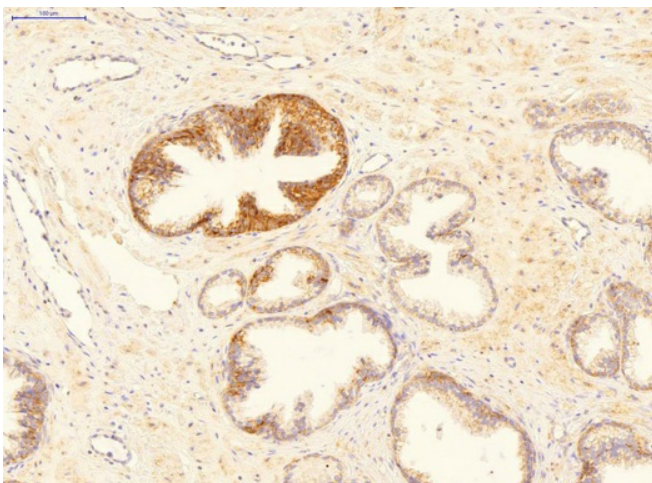


Host: Rabbit  
 Target Name: GA45B  
 Sample Tissue: Fetal Lung Lysate  
 Antibody Dilution: 3.0µg/ml

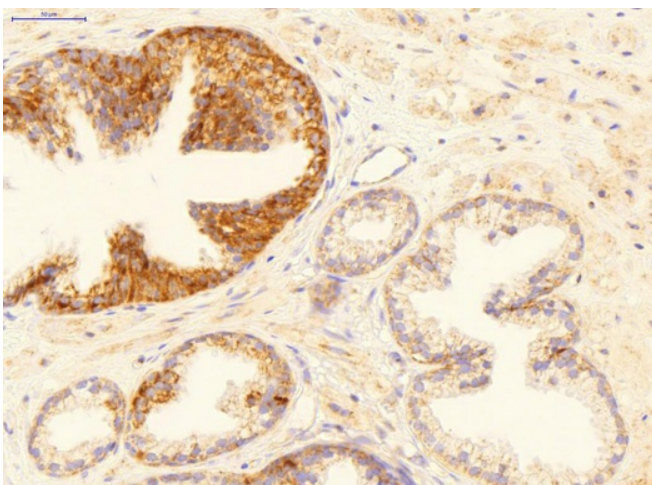
WB Suggested Anti-GADD45B Antibody Titration:  
 3 ug/ml; Positive Control: Human Fetal Lung



Product Page for GADD45B antibody - middle region; Sample Type: Human Prostate Cancer; Primary Antibody Dilution: 2 ug/mL; Color/Signal Descriptions: GADD45B (DAB; brown), nuclei (hematoxylin; blue); Gene Name: GADD45B;



Product Page for GADD45B antibody - middle region; Sample Type: Human Prostate Cancer; Primary Antibody Dilution: 2 ug/mL; Color/Signal Descriptions: GADD45B (DAB; brown), nuclei (hematoxylin; blue); Gene Name: GADD45B;



Product Page for GADD45B antibody - middle region; Sample Type: Human Prostate Cancer; Primary Antibody Dilution: 2 ug/mL; Color/Signal Descriptions: GADD45B (DAB; brown), nuclei (hematoxylin; blue); Gene Name: GADD45B;