

## Product datasheet for **TA346617**

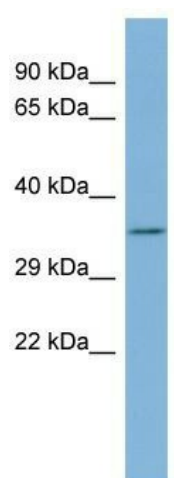
### TTC35 (EMC2) Rabbit Polyclonal Antibody

#### Product data:

|                         |   |
|-------------------------|---|
| Product Type:           | Primary Antibodies  |
| Applications:           | WB  |
| Recommended Dilution:   | WB  |
| Reactivity:             | Human   |
| Host:                   | Rabbit  |
| Isotype:                | IgG   |
| Clonality:              | Polyclonal  |
| Immunogen:              | The immunogen for anti-TTC35 antibody: synthetic peptide directed towards the middle region of human TTC35. Synthetic peptide located within the following region:<br>IQLYDRILQEDPTNTAARKRKIAIRKAQGKNVEAIRELNEYLEQFVGDDQE |
| Formulation:            | Liquid. Purified antibody supplied in 1x PBS buffer with 0.09% (w/v) sodium azide and 2% sucrose.<br><i>Note that this product is shipped as lyophilized powder to China customers.</i>                                   |
| Purification:           | Affinity Purified   |
| Conjugation:            | Unconjugated  |
| Storage:                | Store at -20°C as received.   |
| Stability:              | Stable for 12 months from date of receipt.  |
| Predicted Protein Size: | 35 kDa  |
| Gene Name:              | ER membrane protein complex subunit 2   |
| Database Link:          | <a href="#">NP_055488</a><br><a href="#">Entrez Gene 9694 Human</a><br><a href="#">Q15006</a>   |
| Background:             | The exact function of TTC35 remains unknown.  |
| Synonyms:               | KIAA0103; TTC35   |
| Note:                   | Immunogen Sequence Homology: Dog: 100%; Pig: 100%; Rat: 100%; Horse: 100%; Human: 100%; Mouse: 100%; Bovine: 100%; Rabbit: 100%; Guinea pig: 100%; Zebrafish: 93%   |
| Protein Families:       | Protease  |



[View online »](#)

**Product images:**

WB Suggested Anti-TTC35 Antibody Titration: 0.2-1 ug/ml; ELISA Titer: 1: 312500; Positive Control: Human Spleen