

Product datasheet for **TA346616**

RSU1 Rabbit Polyclonal Antibody

Product data:

| | |
|-------------------------|---|
| Product Type: | Primary Antibodies |
| Applications: | IHC, WB |
| Recommended Dilution: | WB, IHC |
| Reactivity: | Human |
| Host: | Rabbit |
| Isotype: | IgG |
| Clonality: | Polyclonal |
| Immunogen: | The immunogen for anti-RSU1 antibody: synthetic peptide directed towards the C terminal of human RSU1. Synthetic peptide located within the following region: PIADQFQLGVSHVFEYIRSETYKYLYGRHMQANPEPPKKNNDKSKKISRK |
| Formulation: | Liquid. Purified antibody supplied in 1x PBS buffer with 0.09% (w/v) sodium azide and 2% sucrose. <i>Note that this product is shipped as lyophilized powder to China customers.</i> |
| Purification: | Protein A purified |
| Conjugation: | Unconjugated |
| Storage: | Store at -20°C as received. |
| Stability: | Stable for 12 months from date of receipt. |
| Predicted Protein Size: | 31 kDa |
| Gene Name: | Ras suppressor protein 1 |
| Database Link: | NP_036557 Entrez Gene 6251 Human Q15404 |
| Background: | This gene encodes a protein that is involved in the Ras signal transduction pathway, growth inhibition, and nerve-growth factor induced differentiation processes, as determined in mouse and human cell line studies. In mouse, the encoded protein was initially isolated based on its ability to inhibit v-Ras transformation. Multiple alternatively spliced transcript variants for this gene have been reported; one of these variants was found only in glioma tumors. [provided by RefSeq, Jul 2008] |



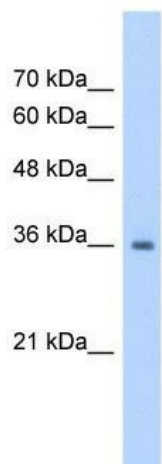
[View online »](#)

Synonyms: RSP-1

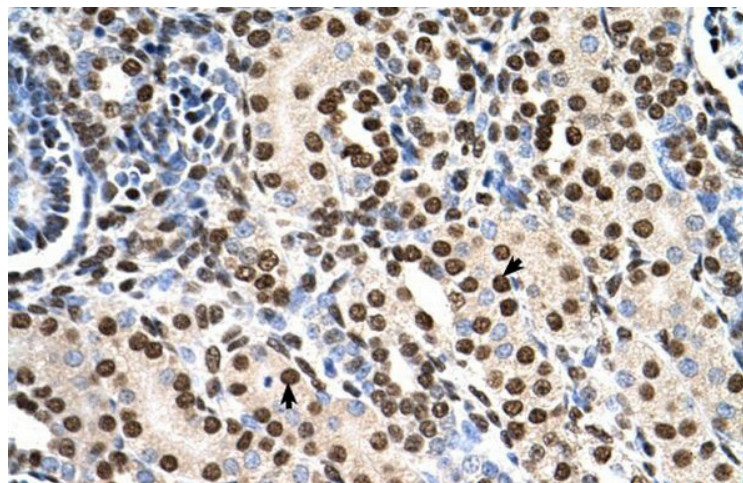
Note: Immunogen Sequence Homology: Dog: 100%; Pig: 100%; Rat: 100%; Horse: 100%; Human: 100%; Mouse: 100%; Bovine: 100%; Guinea pig: 100%; Sheep: 93%; Rabbit: 93%; Zebrafish: 93%

Protein Families: Druggable Genome

Product images:



WB Suggested Anti-RSU1 Antibody Titration: 1.25 ug/ml; Positive Control: Jurkat cell lysate



Human kidney