

Product datasheet for **TA346615**

GRHPR Rabbit Polyclonal Antibody

Product data:

Product Type:	Primary Antibodies
Applications:	IHC, WB
Recommended Dilution:	WB
Reactivity:	Human
Host:	Rabbit
Isotype:	IgG
Clonality:	Polyclonal
Immunogen:	The immunogen for anti-GRHPR antibody: synthetic peptide directed towards the N terminal of human GRHPR. Synthetic peptide located within the following region: EPIPAKELERGVAGAHGLLCLLDHVDKRILDAAGANLKVISTMSVGIDH
Formulation:	Liquid. Purified antibody supplied in 1x PBS buffer with 0.09% (w/v) sodium azide and 2% sucrose. <i>Note that this product is shipped as lyophilized powder to China customers.</i>
Purification:	Affinity Purified
Conjugation:	Unconjugated
Storage:	Store at -20°C as received.
Stability:	Stable for 12 months from date of receipt.
Predicted Protein Size:	36 kDa
Gene Name:	glyoxylate reductase/hydroxypyruvate reductase
Database Link:	NP_036335 Entrez Gene 9380 Human Q9UBQ7
Background:	This gene encodes an enzyme with hydroxypyruvate reductase, glyoxylate reductase, and D-glycerate dehydrogenase enzymatic activities. The enzyme has widespread tissue expression and has a role in metabolism. Type II hyperoxaluria is caused by mutations in this gene. [provided by RefSeq, Jul 2008]
Synonyms:	GLXR; GLYD; PH2



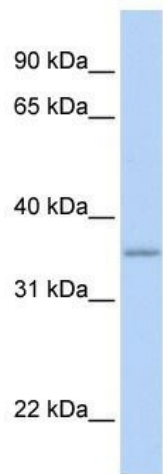
[View online »](#)

Note: Immunogen Sequence Homology: Dog: 100%; Human: 100%; Rabbit: 93%; Rat: 91%; Horse: 86%; Pig: 79%

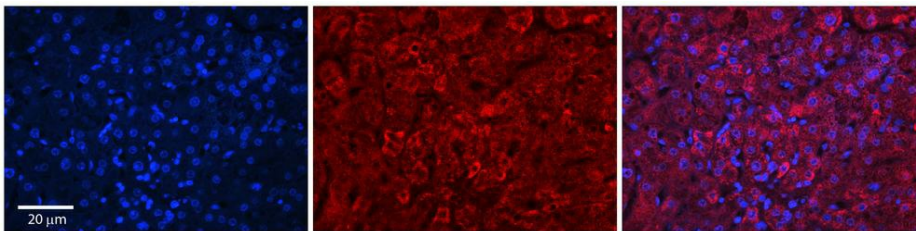
Protein Families: Druggable Genome

Protein Pathways: Glyoxylate and dicarboxylate metabolism, Metabolic pathways, Pyruvate metabolism

Product images:



WB Suggested Anti-GRHPR Antibody Titration: 0.2-1 ug/ml; ELISA Titer: 1: 312500; Positive Control: Human Liver



Rabbit Anti-GRHPR Antibody; Formalin Fixed Paraffin Embedded Tissue: Human Adult Liver; Observed Staining: Cytoplasm in hepatocytes, strong signal, wide tissue distribution; Primary Antibody Concentration: 1: 100; Secondary Antibody: Donkey anti-Rabbit-Cy3; Secondary Antibody Concentration: 1: 200; Magnification: 20X;