

Product datasheet for **TA346614**

REA Rabbit Polyclonal Antibody

Product data:

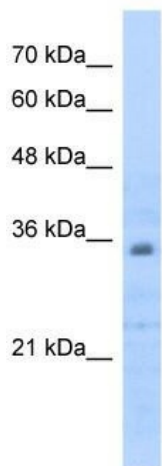
| | |
|-------------------------|--|
| Product Type: | Primary Antibodies |
| Applications: | WB |
| Recommended Dilution: | WB |
| Reactivity: | Human |
| Host: | Rabbit |
| Isotype: | IgG |
| Clonality: | Polyclonal |
| Immunogen: | The immunogen for anti-PHB2 antibody: synthetic peptide directed towards the C terminal of human PHB2. Synthetic peptide located within the following region: KLRKIRAAQNISKTIATSQNRIYLTADNLVNLQDESFTRGSDSLIKGKK |
| Formulation: | Liquid. Purified antibody supplied in 1x PBS buffer with 0.09% (w/v) sodium azide and 2% sucrose. <i>Note that this product is shipped as lyophilized powder to China customers.</i> |
| Purification: | Affinity Purified |
| Conjugation: | Unconjugated |
| Storage: | Store at -20°C as received. |
| Stability: | Stable for 12 months from date of receipt. |
| Predicted Protein Size: | 33 kDa |
| Database Link: | NP_009204 Entrez Gene 11331 Human |
| Background: | PHB2 acts as a mediator of transcriptional repression by nuclear hormone receptors via recruitment of histone deacetylases (By similarity). It functions as an estrogen receptor (ER)-selective coregulator that potentiates the inhibitory activities of antiestrogens and represses the activity of estrogens. PHB2 competes with NCOA1 for modulation of ER transcriptional activity. It probably involved in regulating mitochondrial respiration activity and in aging. |
| Synonyms: | BAP; Bap37; BCAP37; p22; PNAS-141; REA |
| Note: | Immunogen Sequence Homology: Pig: 100%; Rat: 100%; Human: 100%; Mouse: 100%; Bovine: 100%; Rabbit: 100%; Dog: 93%; Guinea pig: 93% |



[View online »](#)

Protein Families: Druggable Genome, Transcription Factors

Product images:



WB Suggested Anti-PHB2 Antibody Titration: 0.2-1 ug/ml; Positive Control: HepG2 cell lysate. PHB2 is supported by BioGPS gene expression data to be expressed in HepG2



PHB2 antibody in Human Heart using Western blot