

Product datasheet for **TA346613**

REA Rabbit Polyclonal Antibody

Product data:

Product Type:	Primary Antibodies
Applications:	WB
Recommended Dilution:	WB
Reactivity:	Human
Host:	Rabbit
Isotype:	IgG
Clonality:	Polyclonal
Immunogen:	The immunogen for anti-PHB2 antibody: synthetic peptide directed towards the N terminal of human PHB2. Synthetic peptide located within the following region: WFQYPIIDIRARPRKISSPTGSKDLQMVNISRVLSPNAQELPSMYQR
Formulation:	Liquid. Purified antibody supplied in 1x PBS buffer with 0.09% (w/v) sodium azide and 2% sucrose. <i>Note that this product is shipped as lyophilized powder to China customers.</i>
Purification:	Affinity Purified
Conjugation:	Unconjugated
Storage:	Store at -20°C as received.
Stability:	Stable for 12 months from date of receipt.
Predicted Protein Size:	33 kDa
Database Link:	NP_009204 Entrez Gene 11331 Human
Background:	PHB2 acts as a mediator of transcriptional repression by nuclear hormone receptors via recruitment of histone deacetylases (By similarity). It functions as an estrogen receptor (ER)-selective coregulator that potentiates the inhibitory activities of antiestrogens and represses the activity of estrogens. PHB2 competes with NCOA1 for modulation of ER transcriptional activity. It probably involved in regulating mitochondrial respiration activity and in aging.
Synonyms:	BAP; Bap37; BCAP37; p22; PNAS-141; REA

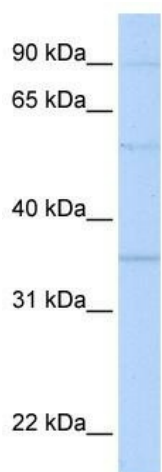


[View online »](#)

Note: Immunogen Sequence Homology: Dog: 100%; Pig: 100%; Rat: 100%; Horse: 100%; Human: 100%; Mouse: 100%; Bovine: 100%; Rabbit: 100%; Guinea pig: 100%; Zebrafish: 93%; Yeast: 77%

Protein Families: Druggable Genome, Transcription Factors

Product images:



WB Suggested Anti-PHB2 Antibody Titration: 0.2-1 ug/ml; Positive Control: MCF7 cell lysate