

## Product datasheet for **TA346611**

### **RABL4 (IFT27) Rabbit Polyclonal Antibody**

#### **Product data:**

<b>Product Type:</b>	Primary Antibodies
<b>Applications:</b>	IHC, WB
<b>Recommended Dilution:</b>	WB
<b>Reactivity:</b>	Human
<b>Host:</b>	Rabbit
<b>Isotype:</b>	IgG
<b>Clonality:</b>	Polyclonal
<b>Immunogen:</b>	The immunogen for anti-RABL4 antibody: synthetic peptide directed towards the C terminal of human RABL4. Synthetic peptide located within the following region: RAWALGQGLECFETSVKEMENFEAPFHCLAKQFHQLYREKVEVFRALA
<b>Formulation:</b>	Liquid. Purified antibody supplied in 1x PBS buffer with 0.09% (w/v) sodium azide and 2% sucrose. <i>Note that this product is shipped as lyophilized powder to China customers.</i>
<b>Purification:</b>	Affinity Purified
<b>Conjugation:</b>	Unconjugated
<b>Storage:</b>	Store at -20°C as received.
<b>Stability:</b>	Stable for 12 months from date of receipt.
<b>Predicted Protein Size:</b>	20 kDa
<b>Gene Name:</b>	intraflagellar transport 27
<b>Database Link:</b>	<a href="#">NP_006851</a> <a href="#">Entrez Gene 11020 Human</a> <a href="#">Q9BW83</a>
<b>Background:</b>	This gene encodes a GTP-binding protein that is a core component of the intraflagellar transport complex B. Characterization of the similar Chlamydomonas protein indicates a function in cell cycle control. Alternative splicing of this gene results in multiple transcript variants. [provided by RefSeq, Jan 2012]
<b>Synonyms:</b>	BBS19; RABL4; RAYL



[View online »](#)

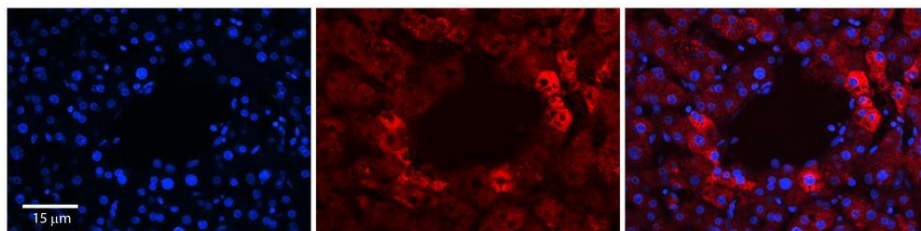
**Note:** Immunogen Sequence Homology: Human: 100%; Dog: 93%; Sheep: 86%; Bovine: 86%; Pig: 85%; Rat: 79%; Mouse: 79%

**Protein Families:** Druggable Genome

**Product images:**



WB Suggested Anti-RABL4 Antibody Titration: 0.2-1 ug/ml; Positive Control: 721\_B cell lysate. IFT27 is supported by BioGPS gene expression data to be expressed in 721\_B



Rabbit Anti-RABL4 Antibody; Formalin Fixed Paraffin Embedded Tissue: Human Adult Liver; Observed Staining: Cytoplasm in hepatocytes surrounding the portal vein only, signal is strong but tissue abundance is low; Primary Antibody Concentration: 1: 100; Secondary Antibody: Donkey anti-Rabbit-Cy3; Secondary Antibody Concentration: 1: 200; Magnification: 20X;