

## Product datasheet for **TA346609**

### Cib1 Rabbit Polyclonal Antibody

#### Product data:

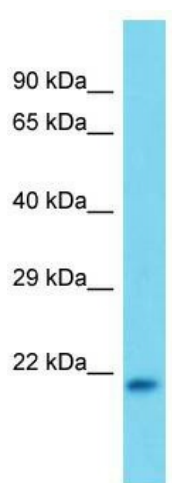
Product Type:	Primary Antibodies
Applications:	WB
Recommended Dilution:	WB
Reactivity:	Rat
Host:	Rabbit
Isotype:	IgG
Clonality:	Polyclonal
Immunogen:	The immunogen for Anti-Cib1 antibody is: synthetic peptide directed towards the N-terminal region of Rat Cib1. Synthetic peptide located within the following region: GGSGSRLSKELLA EYQDLTFLTKQEILLAHRRFCCELLPPEHRTVEESLHT
Formulation:	Liquid. Purified antibody supplied in 1x PBS buffer with 0.09% (w/v) sodium azide and 2% sucrose. <i>Note that this product is shipped as lyophilized powder to China customers.</i>
Purification:	Affinity Purified
Conjugation:	Unconjugated
Storage:	Store at -20°C as received.
Stability:	Stable for 12 months from date of receipt.
Predicted Protein Size:	21 kDa
Gene Name:	calcium and integrin binding 1
Database Link:	<a href="#">NP_112407</a> <a href="#">Entrez Gene 81823 Rat</a> <a href="#">Q9R010</a>
Background:	interacts with both Fnk and Snk kinases [RGD, Feb 2006]. ##Evidence-Data-START## Transcript exon combination :: AF136585.1, BC091143.1 [ECO:0000332] RNAseq introns :: mixed/partial sample support ERS160522, ERS160537 [ECO:0000350] ##Evidence-Data- END##
Synonyms:	CALMYRIN; CIB; CIBP; KIP; KIP1; PRKDCIP; SIP2-28



[View online »](#)

**Note:** Immunogen Sequence Homology: Dog: 100%; Pig: 100%; Rat: 100%; Human: 100%; Mouse: 100%; Sheep: 100%; Bovine: 100%; Rabbit: 100%; Guinea pig: 100%; Horse: 93%

### Product images:



Host: Rabbit; Target Name: Cib1; Sample Tissue: Rat Muscle lysates; Antibody Dilution: 1.0 ug/ml