

## Product datasheet for **TA346608**

### CAP1 Rabbit Polyclonal Antibody

#### Product data:

Product Type:	Primary Antibodies
Applications:	WB
Recommended Dilution:	WB
Reactivity:	Human
Host:	Rabbit
Isotype:	IgG
Clonality:	Polyclonal
Immunogen:	The immunogen for anti-CAP1 antibody: synthetic peptide directed towards the middle region of human CAP1. Synthetic peptide located within the following region: KAQSGPVRSGPKPFSAPKPQTSPSPKRATKKEPAVLELEGKKWRVENQEN
Formulation:	Liquid. Purified antibody supplied in 1x PBS buffer with 0.09% (w/v) sodium azide and 2% sucrose. <i>Note that this product is shipped as lyophilized powder to China customers.</i>
Purification:	Affinity Purified
Conjugation:	Unconjugated
Storage:	Store at -20°C as received.
Stability:	Stable for 12 months from date of receipt.
Predicted Protein Size:	52 kDa
Gene Name:	CAP, adenylate cyclase-associated protein 1 (yeast)
Database Link:	<a href="#">NP_006358</a> <a href="#">Entrez Gene 10487 Human</a> <a href="#">Q01518</a>
Background:	The protein encoded by this gene is related to the <i>S. cerevisiae</i> CAP protein, which is involved in the cyclic AMP pathway. The human protein is able to interact with other molecules of the same protein, as well as with CAP2 and actin. Alternatively spliced transcript variants have been identified. [provided by RefSeq, Jul 2008]
Synonyms:	CAP; CAP1-PEN

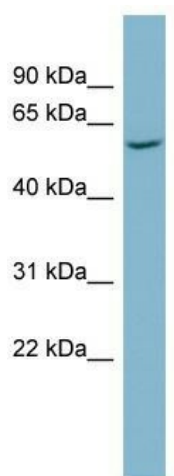


[View online »](#)

**Note:** Immunogen Sequence Homology: Dog: 100%; Pig: 100%; Rat: 100%; Horse: 100%; Human: 100%; Mouse: 100%; Rabbit: 100%; Guinea pig: 100%; Bovine: 92%; Yeast: 75%

**Protein Families:** Druggable Genome

**Product images:**



WB Suggested Anti-CAP1 Antibody Titration: 0.2-1 ug/ml; ELISA Titer: 1: 1562500; Positive Control: THP-1 cell lysate