

Product datasheet for **TA346607**

CAP1 Rabbit Polyclonal Antibody

Product data:

Product Type:	Primary Antibodies
Applications:	WB
Recommended Dilution:	WB
Reactivity:	Human
Host:	Rabbit
Isotype:	IgG
Clonality:	Polyclonal
Immunogen:	The immunogen for anti-CAP1 antibody: synthetic peptide directed towards the N terminal of human CAP1. Synthetic peptide located within the following region: MADMQLVERLERAVGRLEAVSHTSDMHRGYADSPSKAGAAPYVQAFDSL
Formulation:	Liquid. Purified antibody supplied in 1x PBS buffer with 0.09% (w/v) sodium azide and 2% sucrose. <i>Note that this product is shipped as lyophilized powder to China customers.</i>
Purification:	Affinity Purified
Conjugation:	Unconjugated
Storage:	Store at -20°C as received.
Stability:	Stable for 12 months from date of receipt.
Predicted Protein Size:	52 kDa
Gene Name:	CAP, adenylate cyclase-associated protein 1 (yeast)
Database Link:	NP_006358 Entrez Gene 10487 Human Q01518
Background:	The protein encoded by this gene is related to the <i>S. cerevisiae</i> CAP protein, which is involved in the cyclic AMP pathway. The human protein is able to interact with other molecules of the same protein, as well as with CAP2 and actin. Alternatively spliced transcript variants have been identified. [provided by RefSeq, Jul 2008]
Synonyms:	CAP; CAP1-PEN

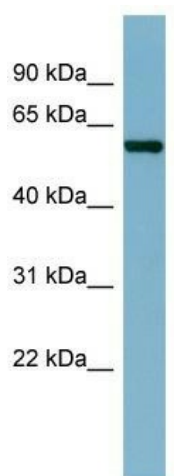


[View online »](#)

Note: Immunogen Sequence Homology: Rat: 100%; Human: 100%; Mouse: 100%; Rabbit: 100%; Dog: 93%; Pig: 91%; Guinea pig: 91%; Horse: 86%; Bovine: 86%

Protein Families: Druggable Genome

Product images:



WB Suggested Anti-CAP1 Antibody Titration: 0.2-1 ug/ml; ELISA Titer: 1: 62500; Positive Control: ACHN cell lysate. CAP1 is supported by BioGPS gene expression data to be expressed in ACHN