

Product datasheet for **TA346604**

MDH2 Rabbit Polyclonal Antibody

Product data:

Product Type:	Primary Antibodies
Applications:	WB
Recommended Dilution:	WB
Reactivity:	Human, Rat
Host:	Rabbit
Isotype:	IgG
Clonality:	Polyclonal
Immunogen:	The immunogen for anti-MDH2 antibody: synthetic peptide directed towards the C terminal of human MDH2. Synthetic peptide located within the following region: TYFSTPLLLGKKGIEKNLIGIGKVSSFEEKMISDAIPELKASIKKGEDFVK
Formulation:	Liquid. Purified antibody supplied in 1x PBS buffer with 0.09% (w/v) sodium azide and 2% sucrose. <i>Note that this product is shipped as lyophilized powder to China customers.</i>
Purification:	Affinity Purified
Conjugation:	Unconjugated
Storage:	Store at -20°C as received.
Stability:	Stable for 12 months from date of receipt.
Predicted Protein Size:	33 kDa
Gene Name:	malate dehydrogenase 2
Database Link:	NP_005909 Entrez Gene 81829 Rat Entrez Gene 4191 Human P40926
Background:	Malate dehydrogenase catalyzes the reversible oxidation of malate to oxaloacetate, utilizing the NAD/NADH cofactor system in the citric acid cycle. The protein encoded by this gene is localized to the mitochondria and may play pivotal roles in the malate-aspartate shuttle that operates in the metabolic coordination between cytosol and mitochondria. Several transcript variants encoding different isoforms have been found for this gene. [provided by RefSeq, Sep 2013]



[View online »](#)

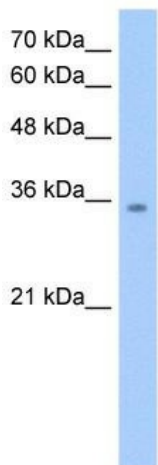
Synonyms: M-MDH; MDH; MGC:3559; MOR1

Note: Immunogen Sequence Homology: Pig: 100%; Rat: 100%; Human: 100%; Mouse: 100%; Rabbit: 100%; Guinea pig: 100%; Dog: 93%; Horse: 93%; Bovine: 93%; Zebrafish: 92%

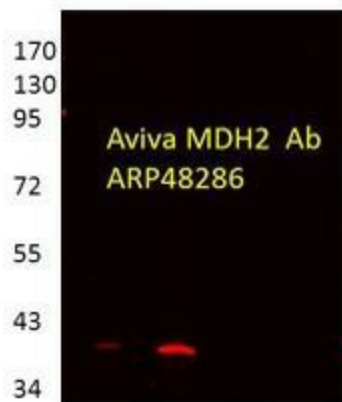
Protein Families: Druggable Genome

Protein Pathways: Citrate cycle (TCA cycle), Glyoxylate and dicarboxylate metabolism, Metabolic pathways, Pyruvate metabolism

Product images:



WB Suggested Anti-MDH2 Antibody Titration: 2.5 ug/ml; Positive Control: HepG2 cell lysate



—
← Malate dehydrogenase 2, 33kDa

MDH2 antibody - C-terminal region validated by WB using Proximal kidney tubules purified from cortex at 1: 1000.