

## Product datasheet for **TA346596**

### Aldolase C (ALDOC) Rabbit Polyclonal Antibody

#### Product data:

Product Type:	Primary Antibodies
Applications:	WB
Recommended Dilution:	WB
Reactivity:	Human
Host:	Rabbit
Isotype:	IgG
Clonality:	Polyclonal
Immunogen:	The immunogen for anti-ALDOC antibody: synthetic peptide directed towards the N terminal of human ALDOC. Synthetic peptide located within the following region: MPHSYPALSAEQKKELSDIALRIVAPGKKGILAADESVGSMAKRLSQIGVE
Formulation:	Liquid. Purified antibody supplied in 1x PBS buffer with 0.09% (w/v) sodium azide and 2% sucrose. <i>Note that this product is shipped as lyophilized powder to China customers.</i>
Purification:	Affinity Purified
Conjugation:	Unconjugated
Storage:	Store at -20°C as received.
Stability:	Stable for 12 months from date of receipt.
Predicted Protein Size:	39 kDa
Gene Name:	aldolase, fructose-bisphosphate C
Database Link:	<a href="#">NP_005156</a> <a href="#">Entrez Gene 230 Human</a> <a href="#">P09972</a>
Background:	This gene encodes a member of the the CELF/BRUNOL protein family, which contain two N-terminal RNA recognition motif (RRM) domains, one C-terminal RRM domain, and a divergent segment of 160-230 aa between the second and third RRM domains. Members of this protein family regulate pre-mRNA alternative splicing and may also be involved in mRNA editing and translation. Alternatively spliced transcript variants have been found for this gene. [provided by RefSeq, Jan 2012]



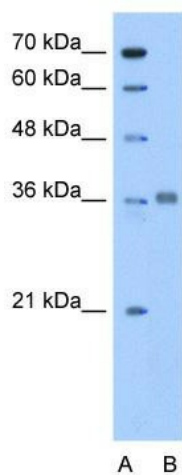
[View online »](#)

**Synonyms:** ALDC

**Note:** Immunogen Sequence Homology: Dog: 100%; Pig: 100%; Rat: 100%; Horse: 100%; Human: 100%; Mouse: 100%; Bovine: 100%; Rabbit: 100%; Guinea pig: 100%; Zebrafish: 85%

**Protein Pathways:** Fructose and mannose metabolism, Glycolysis / Gluconeogenesis, Metabolic pathways, Pentose phosphate pathway

### Product images:



WB Suggested Anti-ALDOC Antibody Titration:  
0.2-1 ug/ml; Positive Control: HepG2 cell lysate