

Product datasheet for **TA346595**

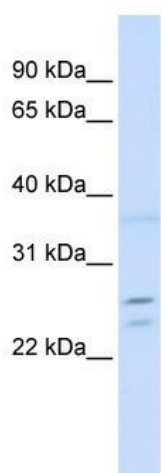
TPD52 Rabbit Polyclonal Antibody

Product data:

Product Type:	Primary Antibodies
Applications:	IHC, WB
Recommended Dilution:	IHC, WB
Reactivity:	Human, Mouse
Host:	Rabbit
Isotype:	IgG
Clonality:	Polyclonal
Immunogen:	The immunogen for anti-TPD52 antibody: synthetic peptide directed towards the middle region of human TPD52. Synthetic peptide located within the following region: AGQKASAAFSSVGSVITKKLEDVKNSPTFKSFEEKVENLKSKVGGTKPAG
Formulation:	Liquid. Purified antibody supplied in 1x PBS buffer with 0.09% (w/v) sodium azide and 2% sucrose. <i>Note that this product is shipped as lyophilized powder to China customers.</i>
Purification:	Affinity Purified
Conjugation:	Unconjugated
Storage:	Store at -20°C as received.
Stability:	Stable for 12 months from date of receipt.
Predicted Protein Size:	24 kDa
Gene Name:	tumor protein D52
Database Link:	NP_001020423 Entrez Gene 21985 Mouse Entrez Gene 7163 Human P55327
Background:	It belongs to the TPD52 family. Its exact function remains unknown.
Synonyms:	D52; hD52; N8L; PC-1; PrLZ
Note:	Immunogen Sequence Homology: Pig: 100%; Rat: 100%; Horse: 100%; Human: 100%; Mouse: 100%; Bovine: 100%; Rabbit: 100%; Guinea pig: 100%; Zebrafish: 77%

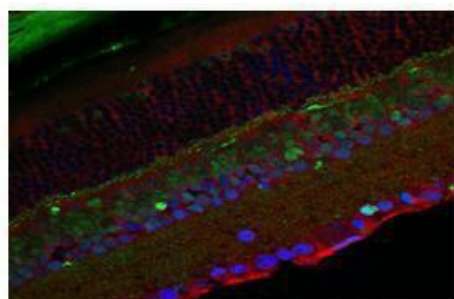


[View online »](#)

Product images:

TPD52

WB Suggested Anti-TPD52 Antibody Titration: 0.2-1 ug/ml; ELISA Titer: 1: 312500; Positive Control: Jurkat cell lysate. TPD52 is strongly supported by BioGPS gene expression data to be expressed in Human Jurkat cells



Red: TPD52 antibody
Green: CtBP antibody
Blue: DAPI

Application: Immunofluorescence;
Species+tissue/cell type: Mouse retina; Primary antibody dilution: 1: 200; Secondary antibody: Goat anti-rabbit Alexafluor 568; Secondary antibody dilution: 1: 200.