

Product datasheet for **TA346593**

Profilin 1 (PFN1) Rabbit Polyclonal Antibody

Product data:

Product Type:	Primary Antibodies
Applications:	WB
Recommended Dilution:	WB
Reactivity:	Human, Mouse
Host:	Rabbit
Isotype:	IgG
Clonality:	Polyclonal
Immunogen:	The immunogen for anti-PFN1 antibody: synthetic peptide directed towards the N terminal of human PFN1. Synthetic peptide located within the following region: AGWNAYIDNLMADGTCQDAAIVGYKDSPSVWAAVPGKTFVNITPAEVGVL
Formulation:	Liquid. Purified antibody supplied in 1x PBS buffer with 0.09% (w/v) sodium azide and 2% sucrose. <i>Note that this product is shipped as lyophilized powder to China customers.</i>
Purification:	Affinity Purified
Conjugation:	Unconjugated
Storage:	Store at -20°C as received.
Stability:	Stable for 12 months from date of receipt.
Predicted Protein Size:	15 kDa
Gene Name:	profilin 1
Database Link:	NP_005013 Entrez Gene 18643 Mouse Entrez Gene 5216 Human P07737
Background:	This gene encodes a member of the profilin family of small actin-binding proteins. The encoded protein plays an important role in actin dynamics by regulating actin polymerization in response to extracellular signals. Deletion of this gene is associated with Miller-Dieker syndrome, and the encoded protein may also play a role in Huntington disease. Multiple pseudogenes of this gene are located on chromosome 1. [provided by RefSeq, Jul 2012]
Synonyms:	ALS18



[View online »](#)

Note: Immunogen Sequence Homology: Pig: 100%; Rat: 100%; Horse: 100%; Human: 100%; Mouse: 100%; Bovine: 100%; Guinea pig: 100%; Zebrafish: 91%

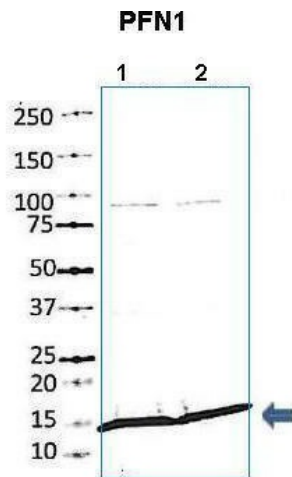
Protein Families: Druggable Genome, Stem cell - Pluripotency

Protein Pathways: Regulation of actin cytoskeleton

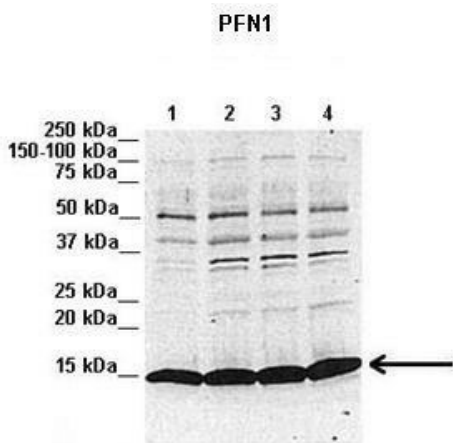
Product images:



WB Suggested Anti-PFN1 Antibody Titration: 0.2-1 ug/ml; Positive Control: Human Liver



Lanes: 1. 20 ug human pregnant uterine muscle cells + hormone 2. 20 ug human pregnant uterine muscle cells - hormone; Primary Antibody Dilution: 1: 2000; Secondary Antibody: Goat anti-rabbit-Alexa Fluor 680; Secondary Antibody Dilution: 1: 25, 000; Gene Name: PFN1;



Lanes: 1. 20 ug murine non-pregnant uteria tissue 2. 20 ug murine non-laboring uterine tissue 3. 20 ug murine laboring uterine tissue 4. 20 ug murine preterm laboring uterine tissue; Primary Antibody Dilution: 1: 2000; Secondary Antibody: Goat anti-rabbit-Alexa Fluor 680; Secondary Antibody Dilution: 1: 25, 000; Gene Name: PFN1;