

## Product datasheet for **TA346590**

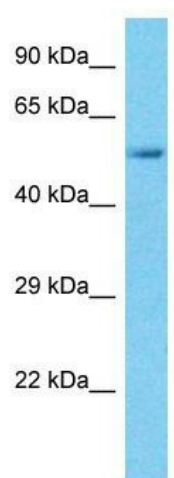
### SPARCL1 Rabbit Polyclonal Antibody

#### Product data:

Product Type:	Primary Antibodies
Applications:	WB
Recommended Dilution:	WB
Reactivity:	Human
Host:	Rabbit
Isotype:	IgG
Clonality:	Polyclonal
Immunogen:	The immunogen for Anti-SPARCL1 antibody is: synthetic peptide directed towards the N-terminal region of Human SPARCL1. Synthetic peptide located within the following region: QESITKREENQEQPRNYSHHQLNRSSKHSQGLRDQGNQEQDPNISNGEEE
Formulation:	Liquid. Purified antibody supplied in 1x PBS buffer with 0.09% (w/v) sodium azide and 2% sucrose. <i>Note that this product is shipped as lyophilized powder to China customers.</i>
Purification:	Affinity Purified
Conjugation:	Unconjugated
Storage:	Store at -20°C as received.
Stability:	Stable for 12 months from date of receipt.
Predicted Protein Size:	59 kDa
Gene Name:	SPARC like 1
Database Link:	<a href="#">NP_001121782</a> <a href="#">Entrez Gene 8404 Human</a> <a href="#">Q14515</a>
Background:	The function of this protein remains unknown.
Synonyms:	MAST 9; MAST9; PIG33; SC1
Note:	Immunogen Sequence Homology: Human: 100%
Protein Families:	Druggable Genome, Secreted Protein



[View online »](#)

**Product images:**

Host: Rabbit; Target Name: SPARCL1; Sample  
Tissue: Thyroid Tumor lysates; Antibody Dilution:  
1.0 ug/ml