

Product datasheet for **TA346585**

LIPF Rabbit Polyclonal Antibody

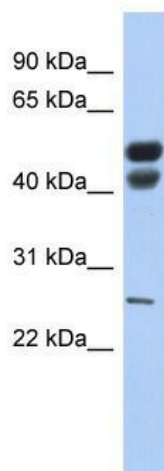
Product data:

Product Type:	Primary Antibodies
Applications:	WB
Recommended Dilution:	WB
Reactivity:	Human
Host:	Rabbit
Isotype:	IgG
Clonality:	Polyclonal
Immunogen:	The immunogen for anti-LIPF antibody: synthetic peptide directed towards the N terminal of human LIPF. Synthetic peptide located within the following region: ISQMITYWGYPNEEYEVVTEDGYILEVNRIPYGGKNSGNTGQRPVFLQH
Formulation:	Liquid. Purified antibody supplied in 1x PBS buffer with 0.09% (w/v) sodium azide and 2% sucrose. <i>Note that this product is shipped as lyophilized powder to China customers.</i>
Purification:	Affinity Purified
Conjugation:	Unconjugated
Storage:	Store at -20°C as received.
Stability:	Stable for 12 months from date of receipt.
Predicted Protein Size:	43 kDa
Gene Name:	lipase F, gastric type
Database Link:	NP_004181 Entrez Gene 8513 Human P07098



[View online »](#)

Background:	This gene encodes gastric lipase, an enzyme involved in the digestion of dietary triglycerides in the gastrointestinal tract, and responsible for 30% of fat digestion processes occurring in human. It is secreted by gastric chief cells in the fundic mucosa of the stomach, and it hydrolyzes the ester bonds of triglycerides under acidic pH conditions. The gene is a member of a conserved gene family of lipases that play distinct roles in neutral lipid metabolism. Several transcript variants encoding different isoforms have been found for this gene. [provided by RefSeq, Nov 2010]
Synonyms:	GL; HGL; HLAL
Note:	Immunogen Sequence Homology: Human: 100%; Rabbit: 93%; Pig: 91%; Guinea pig: 91%; Rat: 86%; Horse: 86%; Mouse: 85%; Dog: 77%
Protein Families:	Druggable Genome, Secreted Protein
Protein Pathways:	Glycerolipid metabolism, Metabolic pathways

Product images:

WB Suggested Anti-LIPF Antibody Titration: 0.2-1 ug/ml; ELISA Titer: 1: 312500; Positive Control: Human Stomach