

## Product datasheet for **TA346584**

### DRG1 Rabbit Polyclonal Antibody

#### Product data:

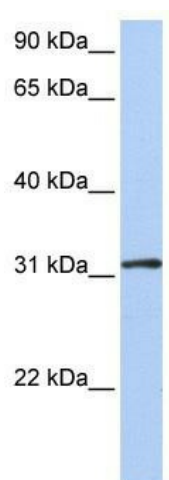
Product Type:	Primary Antibodies
Applications:	WB
Recommended Dilution:	WB
Reactivity:	Human
Host:	Rabbit
Isotype:	IgG
Clonality:	Polyclonal
Immunogen:	The immunogen for anti-DRG1 antibody: synthetic peptide directed towards the middle region of human DRG1. Synthetic peptide located within the following region: VLKPLGHKKIENELEFGFIRLNSKPPNIGFKKKDKGGINLTATCPQSEL
Formulation:	Liquid. Purified antibody supplied in 1x PBS buffer with 0.09% (w/v) sodium azide and 2% sucrose. <i>Note that this product is shipped as lyophilized powder to China customers.</i>
Purification:	Affinity Purified
Conjugation:	Unconjugated
Storage:	Store at -20°C as received.
Stability:	Stable for 12 months from date of receipt.
Predicted Protein Size:	26 kDa
Gene Name:	developmentally regulated GTP binding protein 1
Database Link:	<a href="#">NP_004138</a> <a href="#">Entrez Gene 4733 Human</a> <a href="#">Q9Y295</a>
Background:	Critical regulator of cell growth under specific conditions. Implicated in differentiation and cell cycle arrest.
Synonyms:	NEDD3
Note:	Immunogen Sequence Homology: Dog: 100%; Pig: 100%; Rat: 100%; Horse: 100%; Human: 100%; Mouse: 100%; Bovine: 100%; Rabbit: 100%; Guinea pig: 100%; Yeast: 91%; Zebrafish: 86%



[View online »](#)

Protein Families: Transcription Factors

### Product images:



WB Suggested Anti-DRG1 Antibody Titration: 0.2-1 ug/ml; Positive Control: 721\_B cell lysate. DRG1 is supported by BioGPS gene expression data to be expressed in 721\_B