

Product datasheet for **TA346582**

Selenium Binding Protein 1 (SELENBP1) Rabbit Polyclonal Antibody

Product data:

Product Type:	Primary Antibodies
Applications:	IHC, WB
Recommended Dilution:	WB
Reactivity:	Human
Host:	Rabbit
Isotype:	IgG
Clonality:	Polyclonal
Immunogen:	The immunogen for anti-SELENBP1 antibody: synthetic peptide directed towards the C terminal of human SELENBP1. Synthetic peptide located within the following region: KQFYPDLIREGSVMLQVDVDTVKGGLKLNPNFLVDFGKEPLGPAHAHELK
Formulation:	Liquid. Purified antibody supplied in 1x PBS buffer with 0.09% (w/v) sodium azide and 2% sucrose. <i>Note that this product is shipped as lyophilized powder to China customers.</i>
Purification:	Affinity Purified
Conjugation:	Unconjugated
Storage:	Store at -20°C as received.
Stability:	Stable for 12 months from date of receipt.
Predicted Protein Size:	44 kDa
Gene Name:	selenium binding protein 1
Database Link:	NP_001245217 Entrez Gene 8991 Human Q13228



[View online »](#)

Background:

This gene encodes a member of the selenium-binding protein family. Selenium is an essential nutrient that exhibits potent anticarcinogenic properties, and deficiency of selenium may cause certain neurologic diseases. The effects of selenium in preventing cancer and neurologic diseases may be mediated by selenium-binding proteins, and decreased expression of this gene may be associated with several types of cancer. The encoded protein may play a selenium-dependent role in ubiquitination/deubiquitination-mediated protein degradation. Alternatively spliced transcript variants encoding multiple isoforms have been observed for this gene. [provided by RefSeq, Apr 2012]

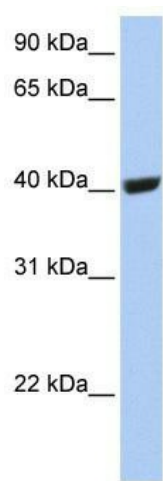
Synonyms:

HEL-S-134P; hSBP; LPSB; SBP56; SP56

Note:

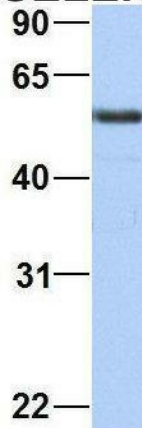
Immunogen Sequence Homology: Dog: 100%; Pig: 100%; Rat: 100%; Horse: 100%; Human: 100%; Mouse: 100%; Bovine: 100%; Guinea pig: 100%; Rabbit: 93%; Zebrafish: 86%; Goat: 79%

Product images:



WB Suggested Anti-SELENBP1 Antibody Titration: 0.2-1 ug/ml; Positive Control: 721_B cell lysate

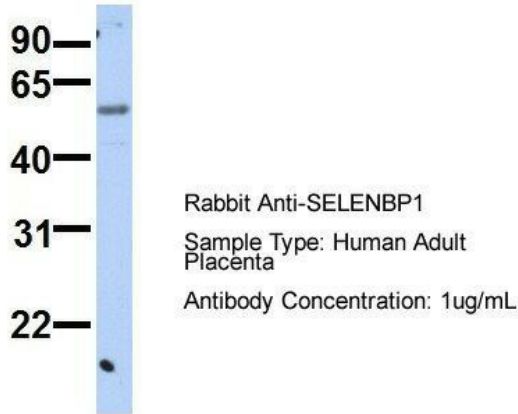
SELENBP1



Rabbit Anti-SELENBP1
Sample Type: Human Fetal Liver
Antibody Concentration: 1ug/mL

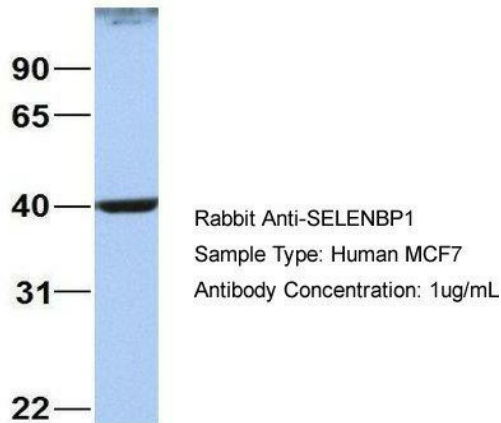
Host: Rabbit; Target Name: FAM46C; Sample Tissue: Human Fetal Liver; Antibody Dilution: 1.0 ug/ml

SELENBP1

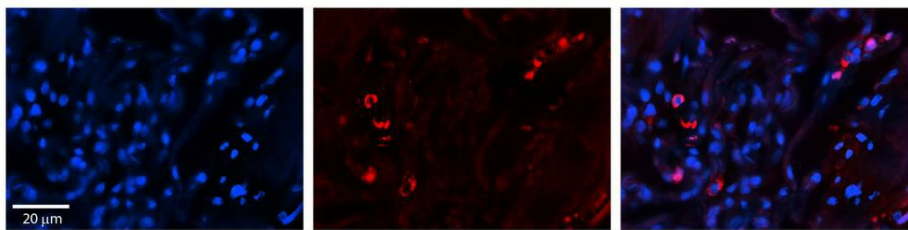


Host: Rabbit; Target Name: SERPINA3; Sample Tissue: Human Adult Placenta; Antibody Dilution: 1.0 ug/ml

SELENBP1



Host: Rabbit; Target Name: NOP56; Sample Tissue: MCF7; Antibody Dilution: 1.0 ug/ml; SELENBP1 is supported by BioGPS gene expression data to be expressed in MCF7



Rabbit Anti-SELENBP1 Antibody; Formalin Fixed Paraffin Embedded Tissue: Human Lung Tissue; Observed Staining: Cytoplasmic, membrane and nuclear in alveolar type I & II cells; Primary Antibody Concentration: 1: 100; Other Working Concentrations: 1/600; Secondary Antibody: Donkey anti-Rabbit-Cy3; Secondary Antibody Concentration: 1: 200; Magnification: 20X; Exposure Time: 0.5–2.0 sec;