

Product datasheet for **TA346580**

PEA15 Rabbit Polyclonal Antibody

Product data:

Product Type:	Primary Antibodies
Applications:	WB
Recommended Dilution:	WB
Reactivity:	Human
Host:	Rabbit
Isotype:	IgG
Clonality:	Polyclonal
Immunogen:	The immunogen for anti-PEA15 antibody: synthetic peptide directed towards the middle region of human PEA15. Synthetic peptide located within the following region: DLLTMVVDYRTRVLKISEEDELDTKLTRIPSAKKYKDIIRQPSEEEIIKL
Formulation:	Liquid. Purified antibody supplied in 1x PBS buffer with 0.09% (w/v) sodium azide and 2% sucrose. <i>Note that this product is shipped as lyophilized powder to China customers.</i>
Purification:	Affinity Purified
Conjugation:	Unconjugated
Storage:	Store at -20°C as received.
Stability:	Stable for 12 months from date of receipt.
Predicted Protein Size:	15 kDa
Gene Name:	phosphoprotein enriched in astrocytes 15
Database Link:	NP_003759 Entrez Gene 8682 Human Q15121
Background:	This gene encodes a death effector domain-containing protein that functions as a negative regulator of apoptosis. The encoded protein is an endogenous substrate for protein kinase C. This protein is also overexpressed in type 2 diabetes mellitus, where it may contribute to insulin resistance in glucose uptake. Alternative splicing results in multiple transcript variants. [provided by RefSeq, Jul 2014]
Synonyms:	HMAT1; HUMMAT1H; MAT1; MAT1H; PEA-15; PED



[View online »](#)

Note: Immunogen Sequence Homology: Dog: 100%; Pig: 100%; Rat: 100%; Horse: 100%; Human: 100%; Mouse: 100%; Bovine: 100%; Rabbit: 100%; Guinea pig: 100%; Zebrafish: 93%

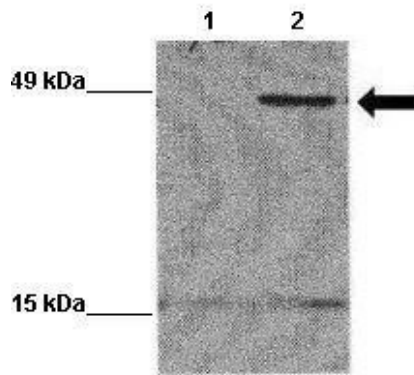
Protein Families: Druggable Genome

Product images:



PEA15

WB Suggested Anti-PEA15 Antibody Titration: 0.2-1 ug/ml; Positive Control: 721_B cell lysate



WB Suggested Anti-PEA15 Antibody; Positive Control: Lane 1: 20ug EGFP-transfected MCF7 lysate Lane 2: 20ug EGFP-PEA15 transfected MCF7 lysate; Primary Antibody Dilution: 1: 1000; Secondary Antibody: Goat anti-rabbit-HRP; Secondary Antibody Dilution: 1: 5000;