

## Product datasheet for **TA346579**

### STK16 Rabbit Polyclonal Antibody

#### Product data:

Product Type:	Primary Antibodies
Applications:	WB
Recommended Dilution:	WB
Reactivity:	Human
Host:	Rabbit
Isotype:	IgG
Clonality:	Polyclonal
Immunogen:	The immunogen for anti-STK16 antibody: synthetic peptide directed towards the middle region of human STK16. Synthetic peptide located within the following region: TDVWSLGCVLYAMMFEGEPYDMVFQKGDSVALAVQNQLSIPQSPRHSSAL
Formulation:	Liquid. Purified antibody supplied in 1x PBS buffer with 0.09% (w/v) sodium azide and 2% sucrose. <i>Note that this product is shipped as lyophilized powder to China customers.</i>
Purification:	Affinity Purified
Conjugation:	Unconjugated
Storage:	Store at -20°C as received.
Stability:	Stable for 12 months from date of receipt.
Predicted Protein Size:	35 kDa
Gene Name:	serine/threonine kinase 16
Database Link:	<a href="#">NP_003682</a> <a href="#">Entrez Gene 8576 Human O75716</a>
Background:	STK16 is a protein kinase that acts on both serine and threonine residues.
Synonyms:	FLJ39635; KRCT; MPSK; PKL12; protein kinase expressed in day 12 fetal liver; serine; threonine kinase 16; TSF1
Note:	Immunogen Sequence Homology: Dog: 100%; Goat: 100%; Human: 100%; Rabbit: 100%; Zebrafish: 100%; Pig: 93%; Rat: 93%; Mouse: 93%; Bovine: 93%; Horse: 92%; Guinea pig: 86%



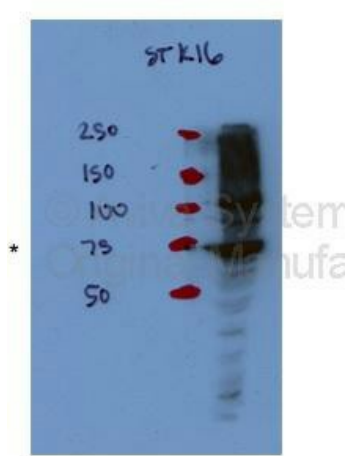
[View online »](#)

Protein Families: Druggable Genome, Protein Kinase

**Product images:**



WB Suggested Anti-STK16 Antibody Titration: 0.2-1 ug/ml; ELISA Titer: 1: 12500; Positive Control: Human brain



STK16 antibody - middle region validated by WB using Hek 293T Cells at 1: 1000.