

## Product datasheet for **TA346577**

### Telethonin (TCAP) Rabbit Polyclonal Antibody

#### Product data:

Product Type:	Primary Antibodies
Applications:	WB
Recommended Dilution:	WB
Reactivity:	Human
Host:	Rabbit
Isotype:	IgG
Clonality:	Polyclonal
Immunogen:	The immunogen for anti-TCAP antibody: synthetic peptide directed towards the N terminal of human TCAP. Synthetic peptide located within the following region: CSLHEEDTQRHETYHQGGCQVLVQRSPWLMMRMGILGRGLQEYQLPYQR
Formulation:	Liquid. Purified antibody supplied in 1x PBS buffer with 0.09% (w/v) sodium azide and 2% sucrose. <i>Note that this product is shipped as lyophilized powder to China customers.</i>
Purification:	Affinity Purified
Conjugation:	Unconjugated
Storage:	Store at -20°C as received.
Stability:	Stable for 12 months from date of receipt.
Predicted Protein Size:	19 kDa
Gene Name:	titin-cap
Database Link:	<a href="#">NP_003664</a> <a href="#">Entrez Gene 8557 Human</a> <a href="#">O15273</a>



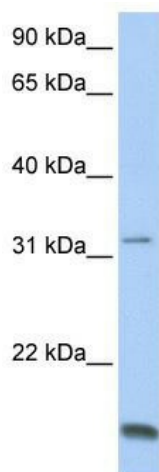
[View online »](#)

**Background:** Sarcomere assembly is regulated by the muscle protein titin. Titin is a giant elastic protein with kinase activity that extends half the length of a sarcomere. It serves as a scaffold to which myofibrils and other muscle related proteins are attached. This gene encodes a protein found in striated and cardiac muscle that binds to the titin Z1-Z2 domains and is a substrate of titin kinase, interactions thought to be critical to sarcomere assembly. Mutations in this gene are associated with limb-girdle muscular dystrophy type 2G. [provided by RefSeq, Jul 2008]

**Synonyms:** CMD1N; CMH25; LGMD2G; T-cap; TELE; telethonin

**Note:** Immunogen Sequence Homology: Rat: 100%; Human: 100%; Mouse: 100%; Bovine: 100%; Dog: 93%; Goat: 93%; Pig: 86%; Horse: 86%; Guinea pig: 86%

### Product images:



WB Suggested Anti-TCAP Antibody Titration: 0.2-1 ug/ml; Positive Control: Human Liver