

Product datasheet for **TA346576**

Tropomyosin 2 (TPM2) Rabbit Polyclonal Antibody

Product data:

Product Type:	Primary Antibodies
Applications:	IHC, WB
Recommended Dilution:	WB, IHC
Reactivity:	Human
Host:	Rabbit
Isotype:	IgG
Clonality:	Polyclonal
Immunogen:	The immunogen for anti-TPM2 antibody: synthetic peptide directed towards the C terminal of human TPM2. Synthetic peptide located within the following region: AETRAEFAERSVAKLEKTIDDLEDEVYAQKMKYKAISEELDNLNDITSL
Formulation:	Liquid. Purified antibody supplied in 1x PBS buffer with 0.09% (w/v) sodium azide and 2% sucrose. <i>Note that this product is shipped as lyophilized powder to China customers.</i>
Purification:	Protein A purified
Conjugation:	Unconjugated
Storage:	Store at -20°C as received.
Stability:	Stable for 12 months from date of receipt.
Predicted Protein Size:	33 kDa
Gene Name:	tropomyosin 2 (beta)
Database Link:	NP_003280 Entrez Gene 7169 Human P07951
Background:	This gene encodes beta-tropomyosin, a member of the actin filament binding protein family, and mainly expressed in slow, type 1 muscle fibers. Mutations in this gene can alter the expression of other sarcomeric tropomyosin proteins, and cause cap disease, nemaline myopathy and distal arthrogyrosis syndromes. Alternatively spliced transcript variants encoding different isoforms have been found for this gene. [provided by RefSeq, Mar 2009]
Synonyms:	AMCD1; DA1; DA2B; HEL-S-273; NEM4; TMSB

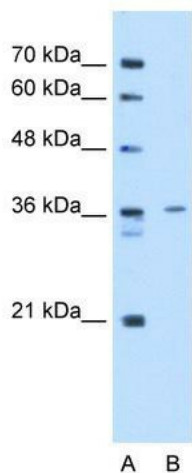


[View online »](#)

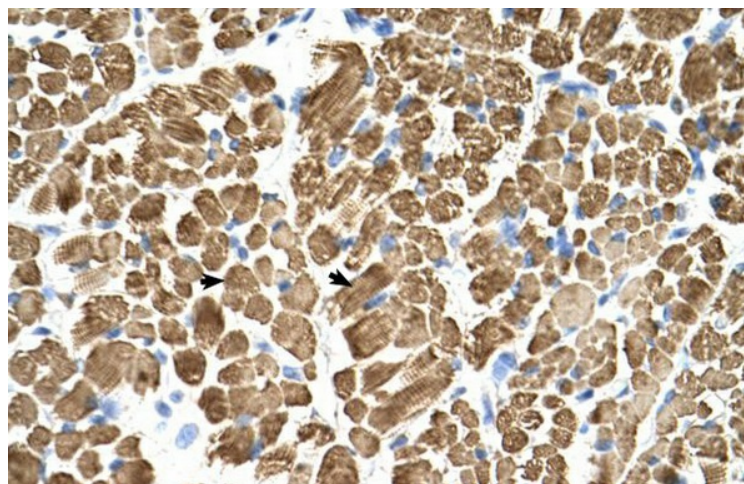
Note: Immunogen Sequence Homology: Dog: 100%; Rat: 100%; Human: 100%; Mouse: 100%; Bovine: 100%; Rabbit: 100%; Zebrafish: 86%; Pig: 85%; Horse: 85%; Sheep: 85%; Guinea pig: 79%

Protein Pathways: Cardiac muscle contraction, Dilated cardiomyopathy, Hypertrophic cardiomyopathy (HCM)

Product images:



WB Suggested Antibody Titration: 2.5 ug/ml;
Positive Control: HepG2



Human Muscle