

## Product datasheet for **TA346575**

### SH3BGRL Rabbit Polyclonal Antibody

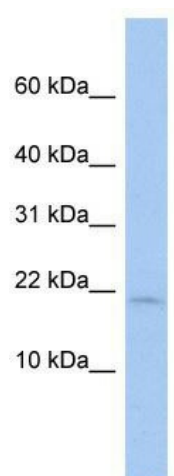
#### Product data:

Product Type:	Primary Antibodies
Applications:	IHC, WB
Recommended Dilution:	WB
Reactivity:	Human
Host:	Rabbit
Isotype:	IgG
Clonality:	Polyclonal
Immunogen:	The immunogen for anti-SH3BGRL antibody: synthetic peptide directed towards the middle region of human SH3BGRL. Synthetic peptide located within the following region: PQIFNESQYRGDYDAFFEARENNAVYAFLGLTAPPGSKEAEVQAKQQA
Formulation:	Liquid. Purified antibody supplied in 1x PBS buffer with 0.09% (w/v) sodium azide and 2% sucrose. <i>Note that this product is shipped as lyophilized powder to China customers.</i>
Purification:	Affinity Purified
Conjugation:	Unconjugated
Storage:	Store at -20°C as received.
Stability:	Stable for 12 months from date of receipt.
Predicted Protein Size:	13 kDa
Gene Name:	SH3 domain binding glutamate rich protein like
Database Link:	<a href="#">NP_003013</a> <a href="#">Entrez Gene 6451 Human</a> <a href="#">O75368</a>
Background:	SH3BGRL belongs to the SH3BGR family. Mutations in predicted EVH1-binding domain of SH3BGRL had a modest effect on suppression of v-Rel transformation.
Synonyms:	HEL-S-115; SH3BGR
Note:	Immunogen Sequence Homology: Dog: 100%; Pig: 100%; Rat: 100%; Horse: 100%; Human: 100%; Mouse: 100%; Bovine: 100%; Rabbit: 100%; Zebrafish: 100%

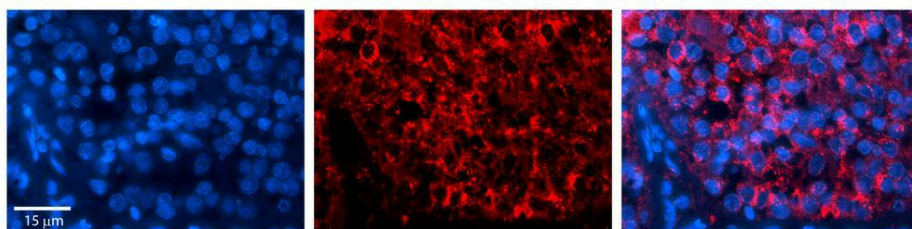


[View online »](#)

## Product images:



WB Suggested Anti-SH3BGRL Antibody Titration: 0.2-1 ug/ml; Positive Control: MCF7 cell lysate. SH3BGRL is strongly supported by BioGPS gene expression data to be expressed in Human MCF7 cells



Rabbit Anti-SH3BGRL Antibody; Formalin Fixed Paraffin Embedded Tissue: Human Pineal Tissue; Observed Staining: Cytoplasmic in cell bodies of pinealocytes; Primary Antibody Concentration: 1: 100; Other Working Concentrations: 1/600; Secondary Antibody: Donkey anti-Rabbit-Cy3; Secondary Antibody Concentration: 1: 200; Magnification: 20X; Exposure Time: 0.5-2.0 sec;