

Product datasheet for **TA346572**

Lactate Dehydrogenase B (LDHB) Rabbit Polyclonal Antibody

Product data:

Product Type:	Primary Antibodies
Applications:	IHC, WB
Recommended Dilution:	WB, IHC
Reactivity:	Human
Host:	Rabbit
Isotype:	IgG
Clonality:	Polyclonal
Immunogen:	The immunogen for Anti-LDHB antibody is: synthetic peptide directed towards the C-terminal region of Human LDHB. Synthetic peptide located within the following region: MYGIENEVFLSLPCILNARGLTSVINQKLKDDDEVAQLKKSADTLWDIQKD
Formulation:	Liquid. Purified antibody supplied in 1x PBS buffer with 0.09% (w/v) sodium azide and 2% sucrose. <i>Note that this product is shipped as lyophilized powder to China customers.</i>
Purification:	Affinity Purified
Conjugation:	Unconjugated
Storage:	Store at -20°C as received.
Stability:	Stable for 12 months from date of receipt.
Predicted Protein Size:	37 kDa
Gene Name:	lactate dehydrogenase B
Database Link:	NP_002291 Entrez Gene 3945 Human P07195
Background:	This gene encodes an enzyme which catalyzes the reversible conversion of lactate and pyruvate, and NAD and NADH, in the glycolytic pathway. Mutations in this gene are associated with lactate dehydrogenase B deficiency. Pseudogenes have been identified on the X chromosome and on chromosome. Multiple alternatively spliced variants, encoding the same protein, have been identified. [provided by RefSeq, Mar 2010]
Synonyms:	HEL-S-281; LDH-B; LDH-H; LDHBD; TRG-5



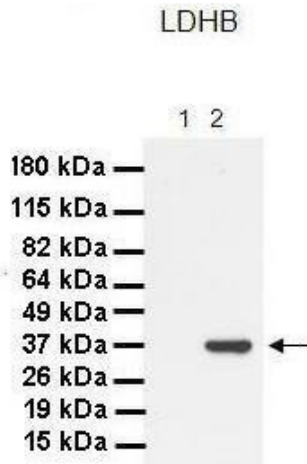
[View online »](#)

Note: Immunogen Sequence Homology: Dog: 100%; Human: 100%; Mouse: 100%; Rabbit: 100%; Pig: 93%; Rat: 93%; Horse: 93%; Bovine: 93%; Guinea pig: 93%; Zebrafish: 91%

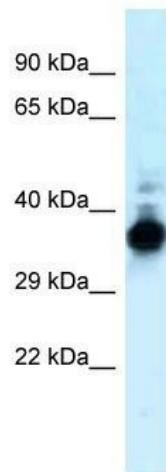
Protein Families: Druggable Genome

Protein Pathways: Cysteine and methionine metabolism, Glycolysis / Gluconeogenesis, Metabolic pathways, Propanoate metabolism, Pyruvate metabolism

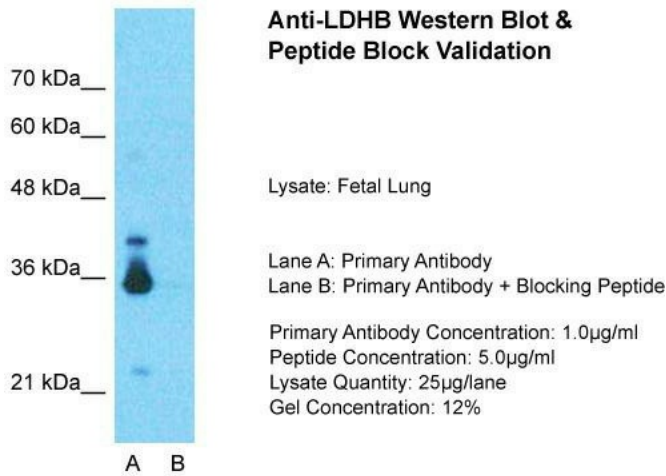
Product images:



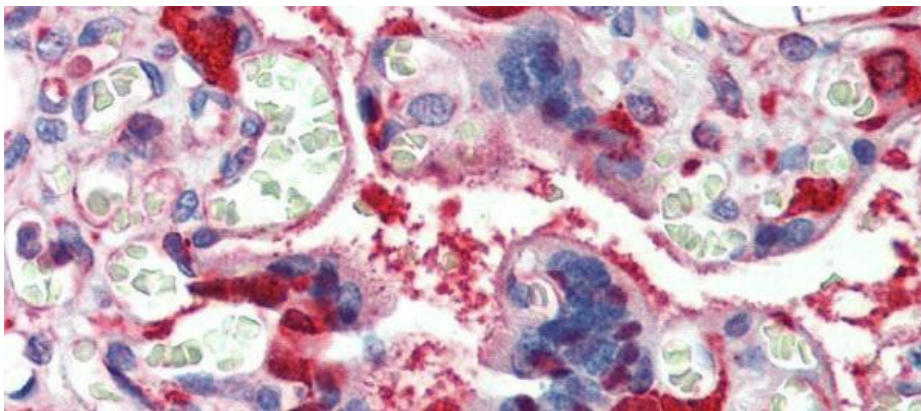
Lanes: 1. 30 ug MiaPaca-2 cell lysate; 2. 30 ug Panc-1 cell lysate; Primary Antibody Dilution: 1: 1000; Secondary Antibody: Goat anti-Rabbit HRP; Secondary Antibody Dilution: 1: 4000; Gene Name: LDHB;



WB Suggested Anti-LDHB Antibody; Titration: 1 ug/ml; Positive Control: 721_B Whole Cell. LDHB is strongly supported by BioGPS gene expression data to be expressed in Human 721_B cells

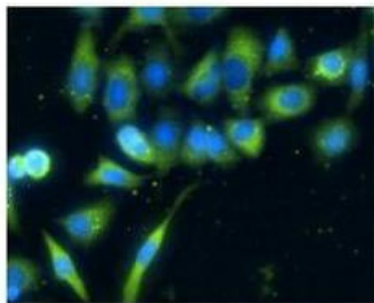


Host: Rabbit; Target Name: LDHB; Sample Tissue: Human Fetal Lung; Lane A: Primary Antibody; Lane B: Primary Antibody + Blocking Peptide; Primary Antibody Concentration: 1 ug/ml; Peptide Concentration: 5 ug/ml; Lysate Quantity: 25 ug/lane/lane; Gel Concentration: 0.12



Rabbit Anti-LDHB Antibody; Paraffin Embedded Tissue: Human Placenta; Antibody Concentration: 5 ug/ml

LDHB



Green : LDHB
Blue: DAPI

Application: IHC; Species+tissue/cell type: Human lung adenocarcinoma cell line A549; Primary antibody dilution: 1: 100; Secondary antibody: Goat anti-rabbit AlexaFluor 488; Secondary antibody dilution: 1: 400