

Product datasheet for **TA346568**

ENO3 Rabbit Polyclonal Antibody

Product data:

Product Type:	Primary Antibodies
Applications:	WB
Recommended Dilution:	WB, IHC
Reactivity:	Human
Host:	Rabbit
Isotype:	IgG
Clonality:	Polyclonal
Immunogen:	The immunogen for anti-ENO3 antibody: synthetic peptide directed towards the N terminal of human ENO3. Synthetic peptide located within the following region: EVDLHTAKGRFRAAVPSGASTGIYEALERDGDGKGRYLGKGVKAVENIN
Formulation:	Liquid. Purified antibody supplied in 1x PBS buffer with 0.09% (w/v) sodium azide and 2% sucrose. <i>Note that this product is shipped as lyophilized powder to China customers.</i>
Purification:	Affinity Purified
Conjugation:	Unconjugated
Storage:	Store at -20°C as received.
Stability:	Stable for 12 months from date of receipt.
Predicted Protein Size:	47 kDa
Gene Name:	enolase 3
Database Link:	NP_001967 Entrez Gene 2027 Human P13929
Background:	This gene encodes one of the three enolase isoenzymes found in mammals. This isoenzyme is found in skeletal muscle cells in the adult where it may play a role in muscle development and regeneration. A switch from alpha enolase to beta enolase occurs in muscle tissue during development in rodents. Mutations in this gene have been associated with glycogen storage disease. Alternatively spliced transcript variants encoding different isoforms have been described. [provided by RefSeq, Jul 2010]



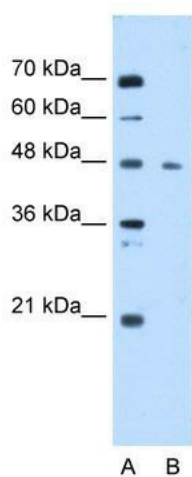
[View online »](#)

Synonyms: GSD13; MSE

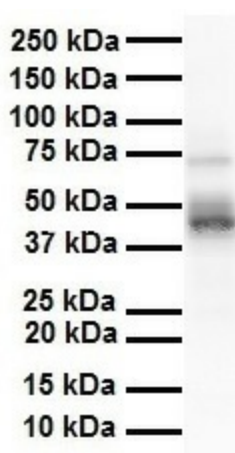
Note: Immunogen Sequence Homology: Human: 100%; Dog: 93%; Pig: 93%; Rat: 93%; Goat: 93%; Horse: 93%; Mouse: 93%; Bovine: 93%; Rabbit: 93%; Zebrafish: 93%; Guinea pig: 93%

Protein Pathways: Glycolysis / Gluconeogenesis, Metabolic pathways, RNA degradation

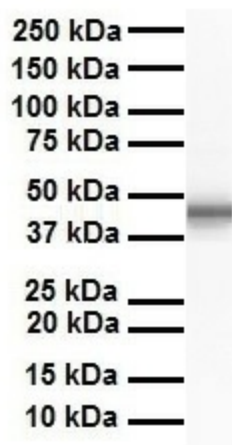
Product images:



WB Suggested Anti-ENO3 Antibody Titration: 0.25 ug/ml; Positive Control: Jurkat cell lysate



ENO3 antibody in Human Heart using Western blot



ENO3 antibody in Human Liver using Western blot