

Product datasheet for **TA346559**

ARF1 Rabbit Polyclonal Antibody

Product data:

Product Type:	Primary Antibodies
Applications:	IHC, IP, WB
Recommended Dilution:	WB, IHC, IP
Reactivity:	Human, Rat, Mouse
Host:	Rabbit
Isotype:	IgG
Clonality:	Polyclonal
Immunogen:	The immunogen for anti-ARF1 antibody: synthetic peptide directed towards the middle region of human ARF1. Synthetic peptide located within the following region: MRMLAEDELRLDAVLLVFANKQDLPNAMNAAEITDKLGLHSLRHRNWWYIQA
Formulation:	Liquid. Purified antibody supplied in 1x PBS buffer with 0.09% (w/v) sodium azide and 2% sucrose. <i>Note that this product is shipped as lyophilized powder to China customers.</i>
Purification:	Affinity Purified
Conjugation:	Unconjugated
Storage:	Store at -20°C as received.
Stability:	Stable for 12 months from date of receipt.
Predicted Protein Size:	21 kDa
Gene Name:	ADP ribosylation factor 1
Database Link:	NP_001649 Entrez Gene 11840 Mouse Entrez Gene 64310 Rat Entrez Gene 375 Human P84077



[View online »](#)

Background:

ADP-ribosylation factor 1 (ARF1) is a member of the human ARF gene family. The family members encode small guanine nucleotide-binding proteins that stimulate the ADP-ribosyltransferase activity of cholera toxin and play a role in vesicular trafficking as activators of phospholipase D. The gene products, including 6 ARF proteins and 11 ARF-like proteins, constitute a family of the RAS superfamily. The ARF proteins are categorized as class I (ARF1, ARF2 and ARF3), class II (ARF4 and ARF5) and class III (ARF6), and members of each class share a common gene organization. The ARF1 protein is localized to the Golgi apparatus and has a central role in intra-Golgi transport. Multiple alternatively spliced transcript variants encoding the same protein have been found for this gene. [provided by RefSeq, Jul 2008]

Synonyms:

ADP-ribosylation factor 1; OTTHUMP00000035715

Note:

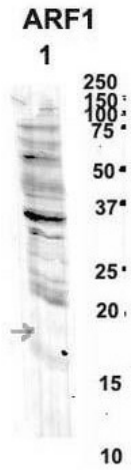
Immunogen Sequence Homology: Dog: 100%; Pig: 100%; Rat: 100%; Horse: 100%; Human: 100%; Mouse: 100%; Sheep: 100%; Yeast: 100%; Bovine: 100%; Rabbit: 100%; Zebrafish: 100%; Guinea pig: 100%

Protein Pathways:

Vibrio cholerae infection

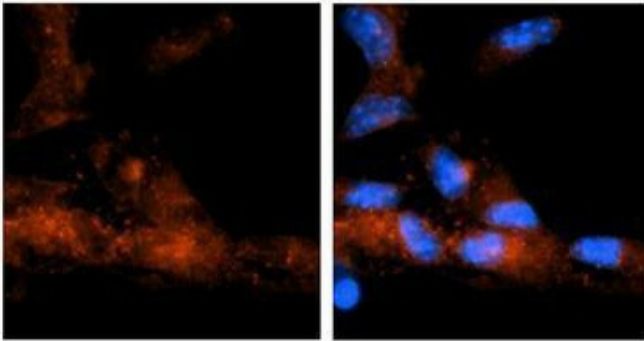
Product images:

ARF1 antibody - middle region validated by WB using Fetal lung Lysate at 0.2-1 ug/ml.



Sample Type: 1. Human NT-2 cells (60ug)2. mouse brain extracts (80ug); Primary antibody dilution: 2 ug/ml; Secondary antibody: IRDye 800CW goat anti-rabbit from Li-COR Bioscience; Secondary antibody dilution: 1: 20, 000;

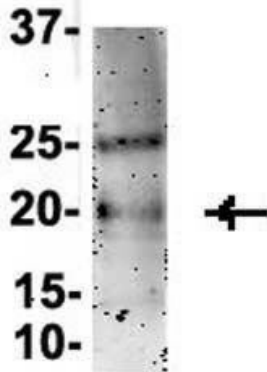
ARF1



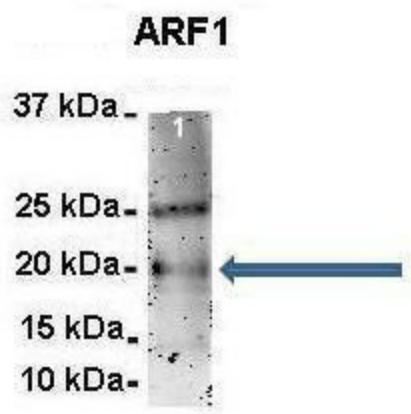
Application: IHC; Species+tissue/cell type: Mouse brain stem cells; Primary antibody dilution: 1: 500; Secondary antibody: Goat anti-rabbit Alexa-Fluor 594; Secondary antibody dilution: 1: 1000

Antibody--RED
DAPI--Blue

ARF1



Sample Type: Mouse Brain lysate



Amount and Sample Type: 500 ug rat brain homogenate; Amount of IP Antibody: 6 ug; Primary Antibody: ARF1; Primary Antibody Dilution: 1: 500; Secondary Antibody: Goat anti-rabbit Alexa-Fluor 594; Secondary Antibody Dilution: 1: 5000; Gene Name: ARF1;