

Product datasheet for **TA346552**

EIF3E Rabbit Polyclonal Antibody

Product data:

Product Type:	Primary Antibodies
Applications:	IHC, WB
Recommended Dilution:	WB, IHC
Reactivity:	Human, Mouse
Host:	Rabbit
Isotype:	IgG
Clonality:	Polyclonal
Immunogen:	The immunogen for anti-EIF3E antibody: synthetic peptide directed towards the N terminal of human EIF3E. Synthetic peptide located within the following region: ELLQGKLDLLSDTNMVDVFAMDVYKNLYSDDIPHALREKRTTVVAQLKQLQ
Formulation:	Liquid. Purified antibody supplied in 1x PBS buffer with 0.09% (w/v) sodium azide and 2% sucrose. <i>Note that this product is shipped as lyophilized powder to China customers.</i>
Purification:	Affinity Purified
Conjugation:	Unconjugated
Storage:	Store at -20°C as received.
Stability:	Stable for 12 months from date of receipt.
Predicted Protein Size:	52 kDa
Gene Name:	eukaryotic translation initiation factor 3 subunit E
Database Link:	NP_001559 Entrez Gene 16341 Mouse Entrez Gene 3646 Human P60228
Background:	EIF3E belongs to the eIF-3 subunit E family. It is a component of the eukaryotic translation initiation factor 3 (eIF-3) complex, which is required for several steps in the initiation of protein synthesis. EIF3E is required for nonsense-mediated mRNA decay (NMD); It may act in conjunction with UPF2 to divert mRNAs from translation to the NMD pathway. The protein may interact with MCM7 and EPAS1 and regulate the proteasome-mediated degradation of these proteins.

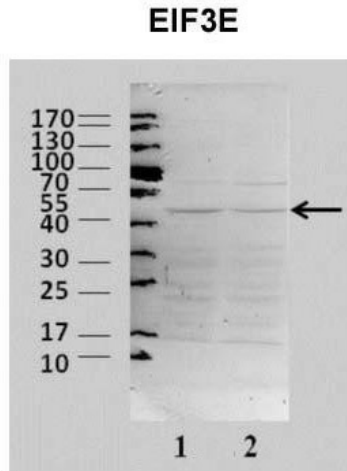


[View online »](#)

Synonyms: eIF3-p46; EIF3-P48; EIF3S6; INT6

Note: Immunogen Sequence Homology: Dog: 100%; Pig: 100%; Rat: 100%; Horse: 100%; Human: 100%; Mouse: 100%; Bovine: 100%; Rabbit: 100%; Guinea pig: 100%; Zebrafish: 75%

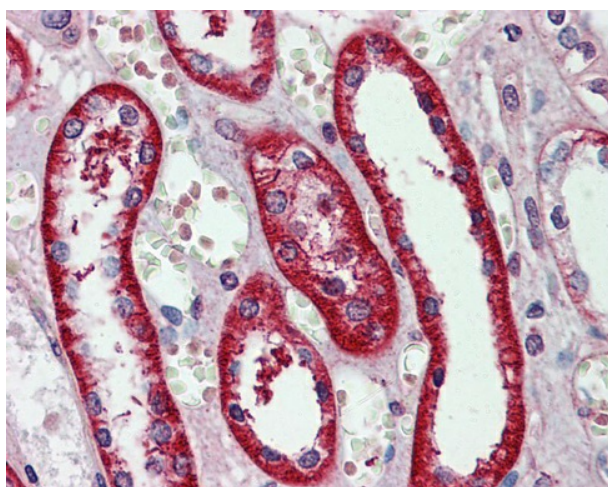
Product images:



EIF3E antibody - N-terminal region validated by WB using B8 mouse cells and HEK293 human cells at 1: 1, 000.



WB Suggested Anti-EIF3E Antibody Titration: 0.2-1 ug/ml; ELISA Titer: 1: 312500; Positive Control: 293T cell lysate. EIF3E is supported by BioGPS gene expression data to be expressed in HEK293T



Kidney