

Product datasheet for **TA346546**

EEF1A1 Rabbit Polyclonal Antibody

Product data:

Product Type:	Primary Antibodies
Applications:	WB
Recommended Dilution:	WB
Reactivity:	Human, Mouse
Host:	Rabbit
Isotype:	IgG
Clonality:	Polyclonal
Immunogen:	The immunogen for anti-EEF1A1 antibody: synthetic peptide directed towards the C terminal of human EEF1A1. Synthetic peptide located within the following region: IVDMVPGKPMCVESFSDYPPLGRFAVRDMRQTVAVGVKAVDKKAAGAGK
Formulation:	Liquid. Purified antibody supplied in 1x PBS buffer with 0.09% (w/v) sodium azide and 2% sucrose. <i>Note that this product is shipped as lyophilized powder to China customers.</i>
Purification:	Protein A purified
Conjugation:	Unconjugated
Storage:	Store at -20°C as received.
Stability:	Stable for 12 months from date of receipt.
Predicted Protein Size:	50 kDa
Gene Name:	eukaryotic translation elongation factor 1 alpha 1
Database Link:	NP_001393 Entrez Gene 13627 Mouse Entrez Gene 1915 Human P68104



[View online »](#)

Background:

This gene encodes an isoform of the alpha subunit of the elongation factor-1 complex, which is responsible for the enzymatic delivery of aminoacyl tRNAs to the ribosome. This isoform (alpha 1) is expressed in brain, placenta, lung, liver, kidney, and pancreas, and the other isoform (alpha 2) is expressed in brain, heart and skeletal muscle. This isoform is identified as an autoantigen in 66% of patients with Felty syndrome. This gene has been found to have multiple copies on many chromosomes, some of which, if not all, represent different pseudogenes. [provided by RefSeq, Jul 2008]

Synonyms:

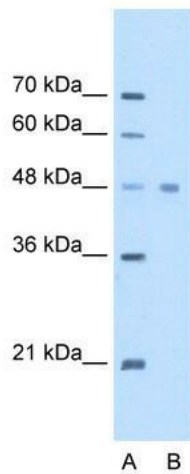
CCS-3; CCS3; EE1A1; EEF-1; EEF1A; eEF1A-1; EF-Tu; EF1A; GRAF-1EF; HNGC:16303; LENG7; PT11

Note:

Immunogen Sequence Homology: Dog: 100%; Pig: 100%; Rat: 100%; Goat: 100%; Horse: 100%; Human: 100%; Mouse: 100%; Sheep: 100%; Bovine: 100%; Rabbit: 100%; Guinea pig: 100%

Protein Families:

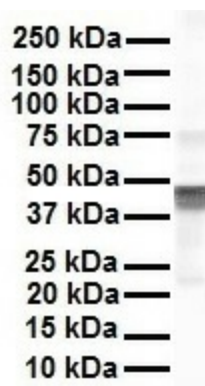
Druggable Genome

Product images:


WB Suggested Anti-EEF1A1 Antibody Titration: 2.5 ug/ml; Positive Control: HepG2 cell lysate. EEF1A1 is strongly supported by BioGPS gene expression data to be expressed in Human HepG2 cells



EEF1A1 antibody in Human HepG2 using Western blot



EEF1A1 antibody in Human Hela using Western blot