

Product datasheet for **TA346545**

Csnk2b Rabbit Polyclonal Antibody

Product data:

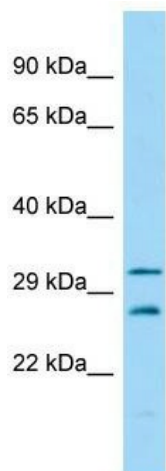
Product Type:	Primary Antibodies
Applications:	WB
Recommended Dilution:	WB
Reactivity:	Mouse
Host:	Rabbit
Isotype:	IgG
Clonality:	Polyclonal
Immunogen:	The immunogen for Anti-Csnk2b antibody is: synthetic peptide directed towards the N-terminal region of Mouse Csnk2b. Synthetic peptide located within the following region: QALDMILDLEPDEELEDNPNQSDLIEQAEMLYGLIHARYILTNRGIAQM
Formulation:	Liquid. Purified antibody supplied in 1x PBS buffer with 0.09% (w/v) sodium azide and 2% sucrose. <i>Note that this product is shipped as lyophilized powder to China customers.</i>
Purification:	Affinity Purified
Conjugation:	Unconjugated
Storage:	Store at -20°C as received.
Stability:	Stable for 12 months from date of receipt.
Predicted Protein Size:	25 kDa
Gene Name:	casein kinase 2, beta polypeptide
Database Link:	NP_034105 Entrez Gene 13001 Mouse P67871
Background:	Csnk2b plays a complex role in regulating the basal catalytic activity of the alpha subunit. It participates in Wnt signaling.
Synonyms:	CK2B; CK2N; CSK2B; G5A; MGC138222; MGC138224; OTTHUMP00000029063; OTTHUMP00000029064; phosvitin



[View online »](#)

Note: Immunogen Sequence Homology: Dog: 100%; Pig: 100%; Rat: 100%; Horse: 100%; Human: 100%; Mouse: 100%; Sheep: 100%; Bovine: 100%; Rabbit: 100%; Zebrafish: 100%; Guinea pig: 100%; Goat: 93%

Product images:



Host: Rabbit; Target Name: Csnk2b; Sample Tissue: Mouse Testis lysates; Antibody Dilution: 1.0 ug/ml