

## Product datasheet for **TA346544**

### Calponin (CNN1) Rabbit Polyclonal Antibody

#### Product data:

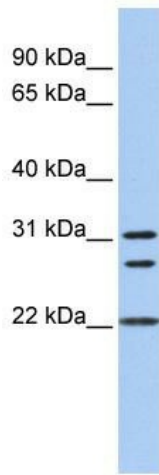
Product Type:	Primary Antibodies
Applications:	WB
Recommended Dilution:	WB
Reactivity:	Mouse, Human
Host:	Rabbit
Isotype:	IgG
Clonality:	Polyclonal
Immunogen:	The immunogen for anti-CNN1 antibody: synthetic peptide directed towards the N terminal of human CNN1. Synthetic peptide located within the following region: MSSAHFNRGPAYGLSAEVKNKLAQKYDQHREQELREWIEGVTGRRIGNNF
Formulation:	Liquid. Purified antibody supplied in 1x PBS buffer with 0.09% (w/v) sodium azide and 2% sucrose. <i>Note that this product is shipped as lyophilized powder to China customers.</i>
Purification:	Affinity Purified
Conjugation:	Unconjugated
Storage:	Store at -20°C as received.
Stability:	Stable for 12 months from date of receipt.
Predicted Protein Size:	33 kDa
Gene Name:	calponin 1
Database Link:	<a href="#">NP_001290</a> <a href="#">Entrez Gene 12797 Mouse</a> <a href="#">Entrez Gene 1264 Human</a> <a href="#">P51911</a>
Background:	Thin filament-associated protein that is implicated in the regulation and modulation of smooth muscle contraction. It is capable of binding to actin, calmodulin, troponin C and tropomyosin. The interaction of calponin with actin inhibits the actomyosin Mg-ATPase activity.
Synonyms:	HEL-S-14; Sm-Calp; SMCC



[View online »](#)

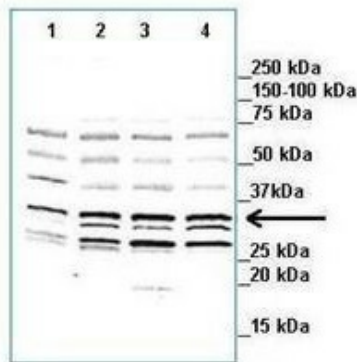
**Note:** Immunogen Sequence Homology: Dog: 100%; Rat: 100%; Horse: 100%; Human: 100%; Mouse: 100%; Sheep: 100%; Bovine: 100%; Pig: 93%; Zebrafish: 77%

**Product images:**



WB Suggested Anti-CNN1 Antibody Titration: 0.2-1 ug/ml; ELISA Titer: 1: 1562500; Positive Control: Hela cell lysate

**CNN1**



Lanes: 1. 20 ug murine non-pregnant uteria tissue 2. 20 ug murine non-laboring uterine tissue 3. 20 ug murine laboring uterine tissue 4. 20 ug murine preterm laboring uterine tissue; Primary Antibody Dilution: 1: 2000; Secondary Antibody: Goat anti-rabbit-Alexa Fluor 680; Secondary Antibody Dilution: 1: 25, 000; Gene Name: CNN1;