

Product datasheet for **TA346541**

Prostaglandin D Synthase (PTGDS) Rabbit Polyclonal Antibody

Product data:

Product Type:	Primary Antibodies
Applications:	IHC, WB
Recommended Dilution:	WB, IHC
Reactivity:	Human
Host:	Rabbit
Isotype:	IgG
Clonality:	Polyclonal
Immunogen:	The immunogen for anti-PTGDS antibody: synthetic peptide directed towards the N terminal of human PTGDS. Synthetic peptide located within the following region: MATHHTLWMGLALLGVLGDLQAAPEAQVSVQPNFQQDKFLGRWFSAGLAS
Formulation:	Liquid. Purified antibody supplied in 1x PBS buffer with 0.09% (w/v) sodium azide and 2% sucrose. <i>Note that this product is shipped as lyophilized powder to China customers.</i>
Purification:	Affinity Purified
Conjugation:	Unconjugated
Storage:	Store at -20°C as received.
Stability:	Stable for 12 months from date of receipt.
Predicted Protein Size:	21 kDa
Gene Name:	prostaglandin D2 synthase
Database Link:	NP_000945 Entrez Gene 5730 Human P41222



[View online »](#)

Background:

The protein encoded by this gene is a glutathione-independent prostaglandin D synthase that catalyzes the conversion of prostaglandin H₂ (PGH₂) to prostaglandin D₂ (PGD₂). PGD₂ functions as a neuromodulator as well as a trophic factor in the central nervous system. PGD₂ is also involved in smooth muscle contraction/relaxation and is a potent inhibitor of platelet aggregation. This gene is preferentially expressed in brain. Studies with transgenic mice overexpressing this gene suggest that this gene may be also involved in the regulation of non-rapid eye movement sleep. [provided by RefSeq, Jul 2008]

Synonyms:

L-PGDS; LPGDS; PDS; PGD2; PGDS; PGDS2

Note:

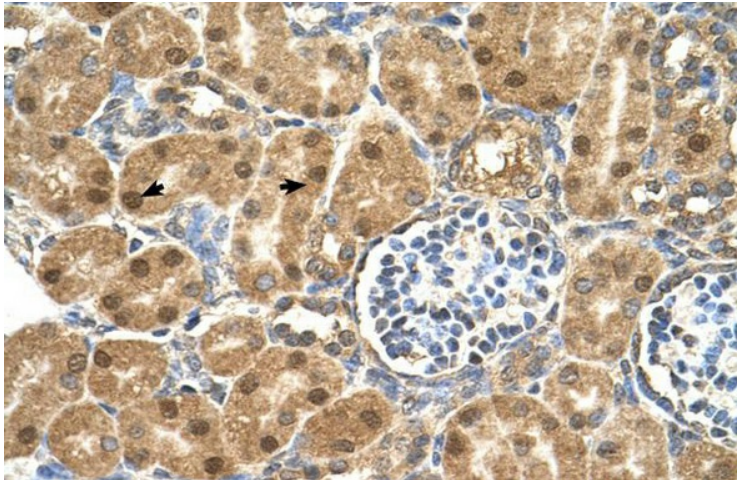
Immunogen Sequence Homology: Rat: 100%; Human: 100%; Mouse: 100%; Dog: 86%; Rabbit: 80%; Pig: 79%; Horse: 79%; Guinea pig: 79%

Protein Pathways:

Arachidonic acid metabolism, Metabolic pathways

Product images:

WB Suggested Anti-PTGDS Antibody Titration: 1 ug/ml; Positive Control: HepG2 cell lysate



Human kidney