

Product datasheet for **TA346536**

Triosephosphate isomerase (TPI1) Rabbit Polyclonal Antibody

Product data:

Product Type:	Primary Antibodies
Applications:	WB
Recommended Dilution:	WB
Reactivity:	Human, Drosophila
Host:	Rabbit
Isotype:	IgG
Clonality:	Polyclonal
Immunogen:	The immunogen for anti-TPI1 antibody: synthetic peptide directed towards the N terminal of human TPI1. Synthetic peptide located within the following region: MAPSRKFFVGGNWKMNQRKQSLGELIGTLNAAKVPADTEVVCAPPTAYID
Formulation:	Liquid. Purified antibody supplied in 1x PBS buffer with 0.09% (w/v) sodium azide and 2% sucrose. <i>Note that this product is shipped as lyophilized powder to China customers.</i>
Purification:	Affinity Purified
Conjugation:	Unconjugated
Storage:	Store at -20°C as received.
Stability:	Stable for 12 months from date of receipt.
Predicted Protein Size:	27 kDa
Gene Name:	triosephosphate isomerase 1
Database Link:	NP_000356 Entrez Gene 7167 Human P60174

Background: This gene encodes an enzyme, consisting of two identical proteins, which catalyzes the isomerization of glyceraldehydes 3-phosphate (G3P) and dihydroxy-acetone phosphate (DHAP) in glycolysis and gluconeogenesis. Mutations in this gene are associated with triosephosphate isomerase deficiency. Pseudogenes have been identified on chromosomes 1, 4, 6 and 7. Alternative splicing results in multiple transcript variants. [provided by RefSeq, Apr 2009]



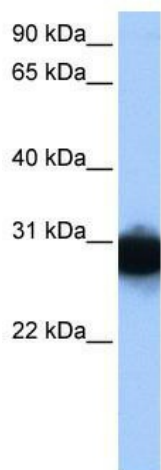
[View online »](#)

Synonyms: HEL-S-49; TIM; TPI; TPID

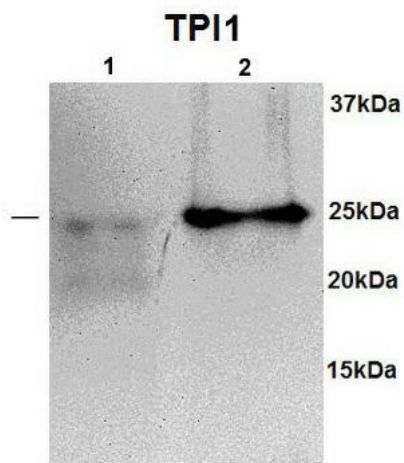
Note: Immunogen Sequence Homology: Human: 100%; Horse: 86%; Dog: 79%; Pig: 79%; Bovine: 79%; Rabbit: 79%; Guinea pig: 79%

Protein Pathways: Fructose and mannose metabolism, Glycolysis / Gluconeogenesis, Inositol phosphate metabolism, Metabolic pathways

Product images:



WB Suggested Anti-TPI1 Antibody Titration: 0.2-1 ug/ml; Positive Control: HepG2 cell lysate



HEPG2, Drosophila