

Product datasheet for **TA346534**

PGK1 Rabbit Polyclonal Antibody

Product data:

Product Type:	Primary Antibodies
Applications:	IHC, WB
Recommended Dilution:	WB, IHC
Reactivity:	Human
Host:	Rabbit
Isotype:	IgG
Clonality:	Polyclonal
Immunogen:	The immunogen for anti-PGK1 antibody: synthetic peptide directed towards the C terminal of human PGK1. Synthetic peptide located within the following region: ATVASGIPAGWMGLDCGPESKKYAEAVTRAKQIVWNGPVGVFWEAFAR
Formulation:	Liquid. Purified antibody supplied in 1x PBS buffer with 0.09% (w/v) sodium azide and 2% sucrose. <i>Note that this product is shipped as lyophilized powder to China customers.</i>
Purification:	Protein A purified
Conjugation:	Unconjugated
Storage:	Store at -20°C as received.
Stability:	Stable for 12 months from date of receipt.
Predicted Protein Size:	44 kDa
Gene Name:	phosphoglycerate kinase 1
Database Link:	NP_000282 Entrez Gene 5230 Human P00558



[View online »](#)

Background:

The protein encoded by this gene is a glycolytic enzyme that catalyzes the conversion of 1,3-diphosphoglycerate to 3-phosphoglycerate. The encoded protein may also act as a cofactor for polymerase alpha. Additionally, this protein is secreted by tumor cells where it participates in angiogenesis by functioning to reduce disulfide bonds in the serine protease, plasmin, which consequently leads to the release of the tumor blood vessel inhibitor angiostatin. The encoded protein has been identified as a moonlighting protein based on its ability to perform mechanistically distinct functions. Deficiency of the enzyme is associated with a wide range of clinical phenotypes hemolytic anemia and neurological impairment. Pseudogenes of this gene have been defined on chromosomes 19, 21 and the X chromosome. [provided by RefSeq, Jan 2014]

Synonyms:

HEL-S-68p; MIG10; PGKA

Note:

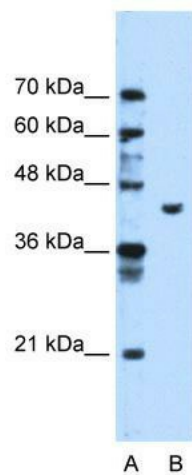
Immunogen Sequence Homology: Dog: 100%; Rat: 100%; Human: 100%; Sheep: 100%; Bovine: 100%; Rabbit: 100%; Pig: 92%; Horse: 92%; Mouse: 92%; Zebrafish: 92%; Guinea pig: 92%

Protein Families:

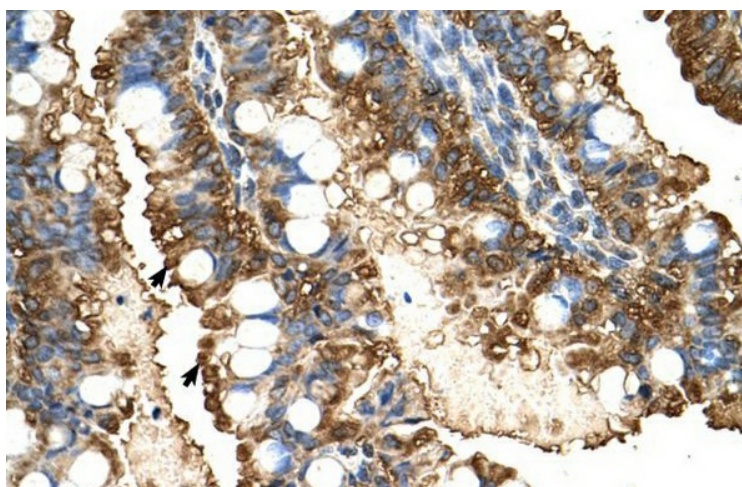
Druggable Genome

Protein Pathways:

Glycolysis / Gluconeogenesis, Metabolic pathways

Product images:

WB Suggested Anti-PGK1 Antibody Titration: 1.25 ug/ml; Positive Control: HepG2 cell lysate



Human Intestine