

## Product datasheet for **TA346531**

### PDHA1 Rabbit Polyclonal Antibody

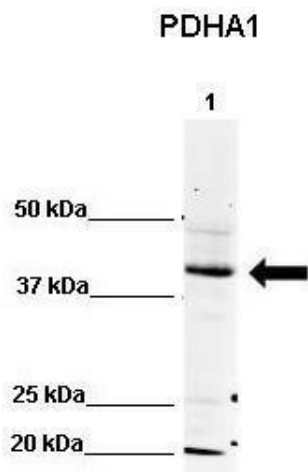
#### Product data:

Product Type:	Primary Antibodies
Applications:	WB
Recommended Dilution:	WB
Reactivity:	Human, Mouse
Host:	Rabbit
Isotype:	IgG
Clonality:	Polyclonal
Immunogen:	The immunogen for anti-PDHA1 antibody: synthetic peptide directed towards the N terminal of human PDHA1. Synthetic peptide located within the following region: MRKMLAAVSRVLSGASQKPASRVLVASRNFANDATFEIKKCDLHRLEEGP
Formulation:	Liquid. Purified antibody supplied in 1x PBS buffer with 0.09% (w/v) sodium azide and 2% sucrose. <i>Note that this product is shipped as lyophilized powder to China customers.</i>
Purification:	Protein A purified
Conjugation:	Unconjugated
Storage:	Store at -20°C as received.
Stability:	Stable for 12 months from date of receipt.
Predicted Protein Size:	40 kDa
Gene Name:	pyruvate dehydrogenase (lipoamide) alpha 1
Database Link:	<a href="#">NP_000275</a> <a href="#">Entrez Gene 18597 Mouse</a> <a href="#">Entrez Gene 5160 Human</a> <a href="#">P08559</a>

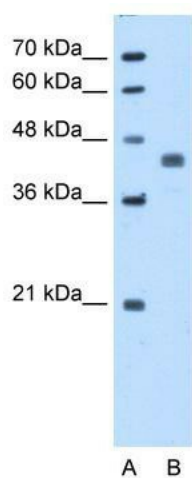


[View online »](#)

<b>Background:</b>	The pyruvate dehydrogenase (PDH) complex is a nuclear-encoded mitochondrial multienzyme complex that catalyzes the overall conversion of pyruvate to acetyl-CoA and CO <sub>2</sub> , and provides the primary link between glycolysis and the tricarboxylic acid (TCA) cycle. The PDH complex is composed of multiple copies of three enzymatic components: pyruvate dehydrogenase (E1), dihydrolipoamide acetyltransferase (E2) and lipoamide dehydrogenase (E3). The E1 enzyme is a heterotetramer of two alpha and two beta subunits. This gene encodes the E1 alpha 1 subunit containing the E1 active site, and plays a key role in the function of the PDH complex. Mutations in this gene are associated with pyruvate dehydrogenase E1-alpha deficiency and X-linked Leigh syndrome. Alternatively spliced transcript variants encoding different isoforms have been found for this gene. [provided by RefSeq, Mar 2010]
<b>Synonyms:</b>	PDHA; PDHAD; PDHCE1A; PHE1A
<b>Note:</b>	Immunogen Sequence Homology: Dog: 100%; Pig: 100%; Rat: 100%; Human: 100%; Mouse: 100%; Rabbit: 100%; Guinea pig: 100%; Horse: 93%; Bovine: 93%
<b>Protein Families:</b>	Druggable Genome
<b>Protein Pathways:</b>	Butanoate metabolism, Citrate cycle (TCA cycle), Glycolysis / Gluconeogenesis, Metabolic pathways, Pyruvate metabolism, Valine, leucine and isoleucine biosynthesis

**Product images:**

WB Suggested Anti-PDHA1 Antibody; Positive Control: Lane 1: 80ug mouse brain extract; Primary Antibody Dilution: 1: 500; Secondary Antibody: IRDye 800 CW goat anti-rabbit from LICOR Bioscience; Secondary Antibody Dilution: 1: 20, 000;



WB Suggested Anti-PDHA1 Antibody Titration: 5.0 ug/ml; Positive Control: HepG2 cell lysate. PDHA1 is supported by BioGPS gene expression data to be expressed in HepG2