

## Product datasheet for **TA346529**

### ornithine aminotransferase (OAT) Rabbit Polyclonal Antibody

#### Product data:

Product Type:	Primary Antibodies
Applications:	WB
Recommended Dilution:	WB
Reactivity:	Human, Mouse
Host:	Rabbit
Isotype:	IgG
Clonality:	Polyclonal
Immunogen:	The immunogen for anti-OAT antibody: synthetic peptide directed towards the middle region of human OAT. Synthetic peptide located within the following region: RTLSAISSSTDPTSVDGFGPFMPGFDIIPYNDLPALERALQDPNVAAFMV
Formulation:	Liquid. Purified antibody supplied in 1x PBS buffer with 0.09% (w/v) sodium azide and 2% sucrose. <i>Note that this product is shipped as lyophilized powder to China customers.</i>
Purification:	Affinity Purified
Conjugation:	Unconjugated
Storage:	Store at -20°C as received.
Stability:	Stable for 12 months from date of receipt.
Predicted Protein Size:	45 kDa
Gene Name:	ornithine aminotransferase
Database Link:	<a href="#">NP_000265</a> <a href="#">Entrez Gene 18242 Mouse</a> <a href="#">Entrez Gene 4942 Human</a> <a href="#">P04181</a>
Background:	This gene encodes the mitochondrial enzyme ornithine aminotransferase, which is a key enzyme in the pathway that converts arginine and ornithine into the major excitatory and inhibitory neurotransmitters glutamate and GABA. Mutations that result in a deficiency of this enzyme cause the autosomal recessive eye disease Gyrate Atrophy. Alternatively spliced transcript variants encoding different isoforms have been described. Related pseudogenes have been defined on the X chromosome. [provided by RefSeq, Jan 2010]



[View online »](#)

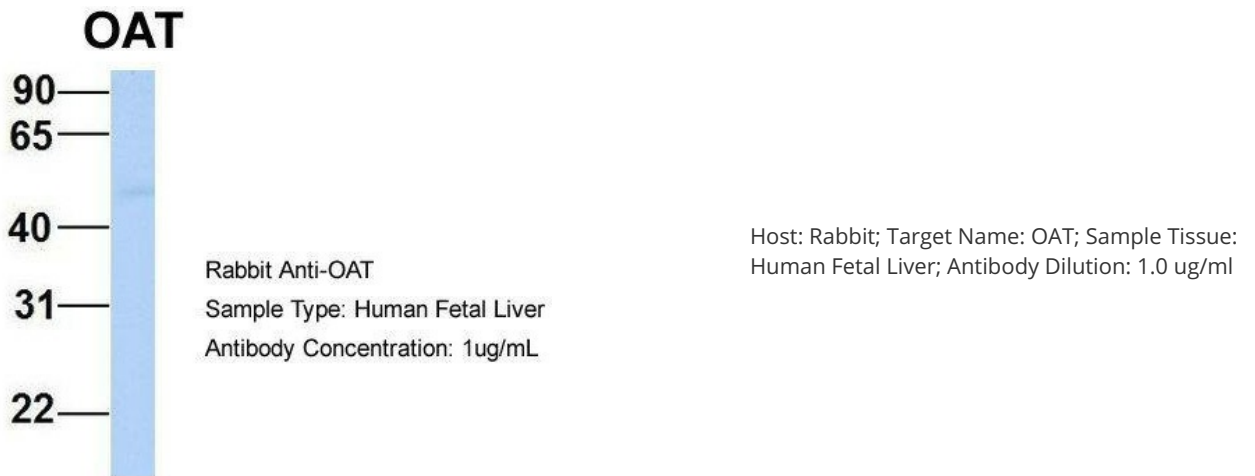
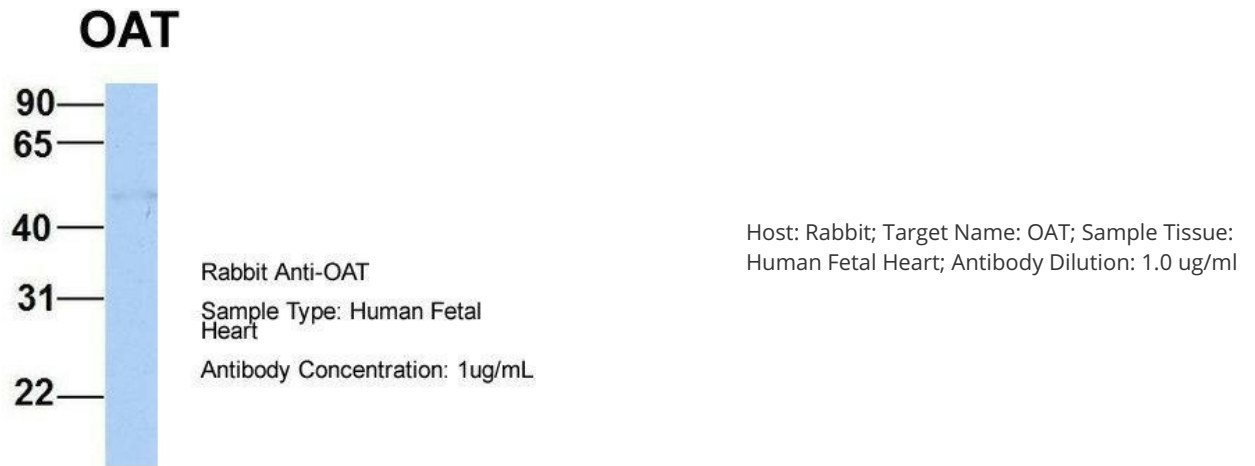
**Synonyms:** GACR; HOGA; OATASE; OKT

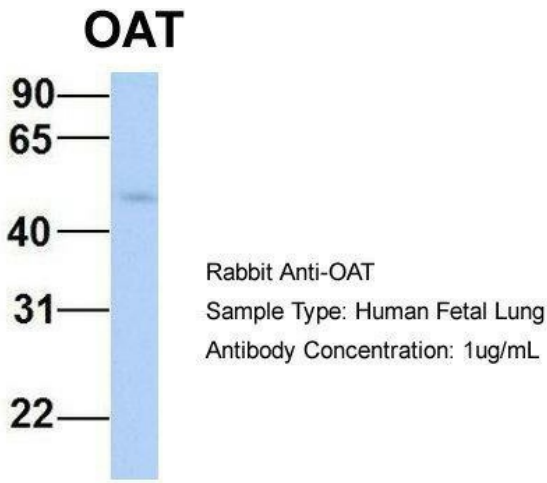
**Note:** Immunogen Sequence Homology: Pig: 100%; Rat: 100%; Horse: 100%; Human: 100%; Mouse: 100%; Bovine: 100%; Rabbit: 100%; Dog: 93%; Zebrafish: 93%; Guinea pig: 86%

**Protein Families:** Druggable Genome

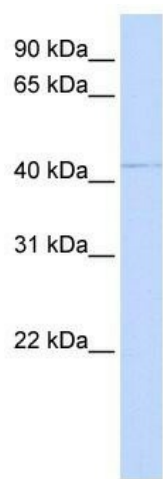
**Protein Pathways:** Arginine and proline metabolism, Metabolic pathways

**Product images:**





Host: Rabbit; Target Name: OAT; Sample Tissue: Human Fetal Lung; Antibody Dilution: 1.0 ug/ml



WB Suggested Anti-OAT Antibody Titration: 0.2-1 ug/ml; ELISA Titer: 1: 12500; Positive Control: 293T cell lysate. OAT is supported by BioGPS gene expression data to be expressed in HEK293T