

Product datasheet for **TA346528**

HADHB Rabbit Polyclonal Antibody

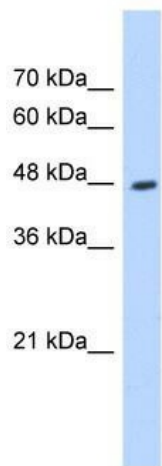
Product data:

Product Type:	Primary Antibodies
Applications:	WB
Recommended Dilution:	WB, IHC
Reactivity:	Human
Host:	Rabbit
Isotype:	IgG
Clonality:	Polyclonal
Immunogen:	The immunogen for anti-HADHB antibody: synthetic peptide directed towards the C terminal of human HADHB. Synthetic peptide located within the following region: LLLGPTYATPKVLEKAGLTMNDIDAFEFHEAFSGQILANFKAMDSDWFAE
Formulation:	Liquid. Purified antibody supplied in 1x PBS buffer with 0.09% (w/v) sodium azide and 2% sucrose. <i>Note that this product is shipped as lyophilized powder to China customers.</i>
Purification:	Affinity Purified
Conjugation:	Unconjugated
Storage:	Store at -20°C as received.
Stability:	Stable for 12 months from date of receipt.
Predicted Protein Size:	47 kDa
Gene Name:	hydroxyacyl-CoA dehydrogenase/3-ketoacyl-CoA thiolase/enoyl-CoA hydratase (trifunctional protein), beta subunit
Database Link:	NP_000174 Entrez Gene 3032 Human P55084



[View online »](#)

- Background:** This gene encodes the beta subunit of the mitochondrial trifunctional protein, which catalyzes the last three steps of mitochondrial beta-oxidation of long chain fatty acids. The mitochondrial membrane-bound heterocomplex is composed of four alpha and four beta subunits, with the beta subunit catalyzing the 3-ketoacyl-CoA thiolase activity. The encoded protein can also bind RNA and decreases the stability of some mRNAs. The genes of the alpha and beta subunits of the mitochondrial trifunctional protein are located adjacent to each other in the human genome in a head-to-head orientation. Mutations in this gene result in trifunctional protein deficiency. Alternatively spliced transcript variants encoding different isoforms have been described. [provided by RefSeq, Jul 2013]
- Synonyms:** ECHB; MSTP029; MTPB; TP-BETA
- Note:** Immunogen Sequence Homology: Dog: 100%; Pig: 100%; Rat: 100%; Human: 100%; Mouse: 100%; Horse: 93%; Bovine: 93%; Rabbit: 93%; Guinea pig: 93%; Zebrafish: 86%; Yeast: 83%
- Protein Pathways:** Fatty acid elongation in mitochondria, Fatty acid metabolism, Metabolic pathways, Valine, leucine and isoleucine degradation

Product images:

WB Suggested Anti-HADHB Antibody Titration: 0.25 ug/ml; Positive Control: HepG2 cell lysate. HADHB is supported by BioGPS gene expression data to be expressed in HepG2